

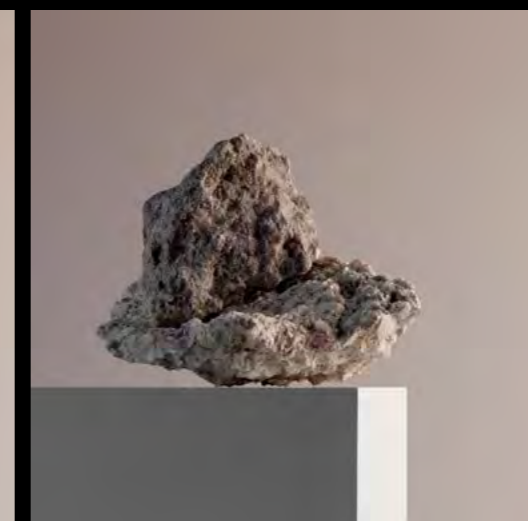
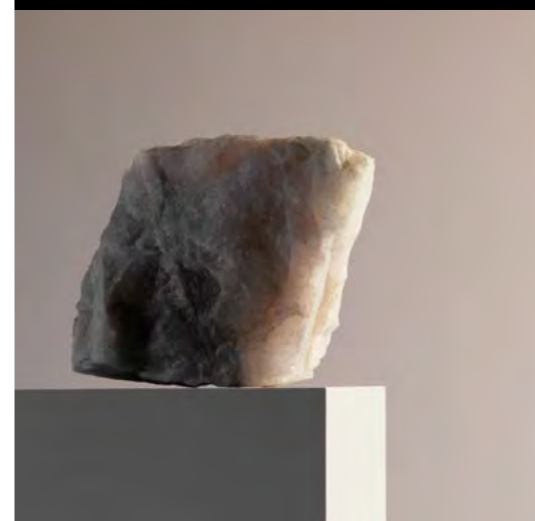
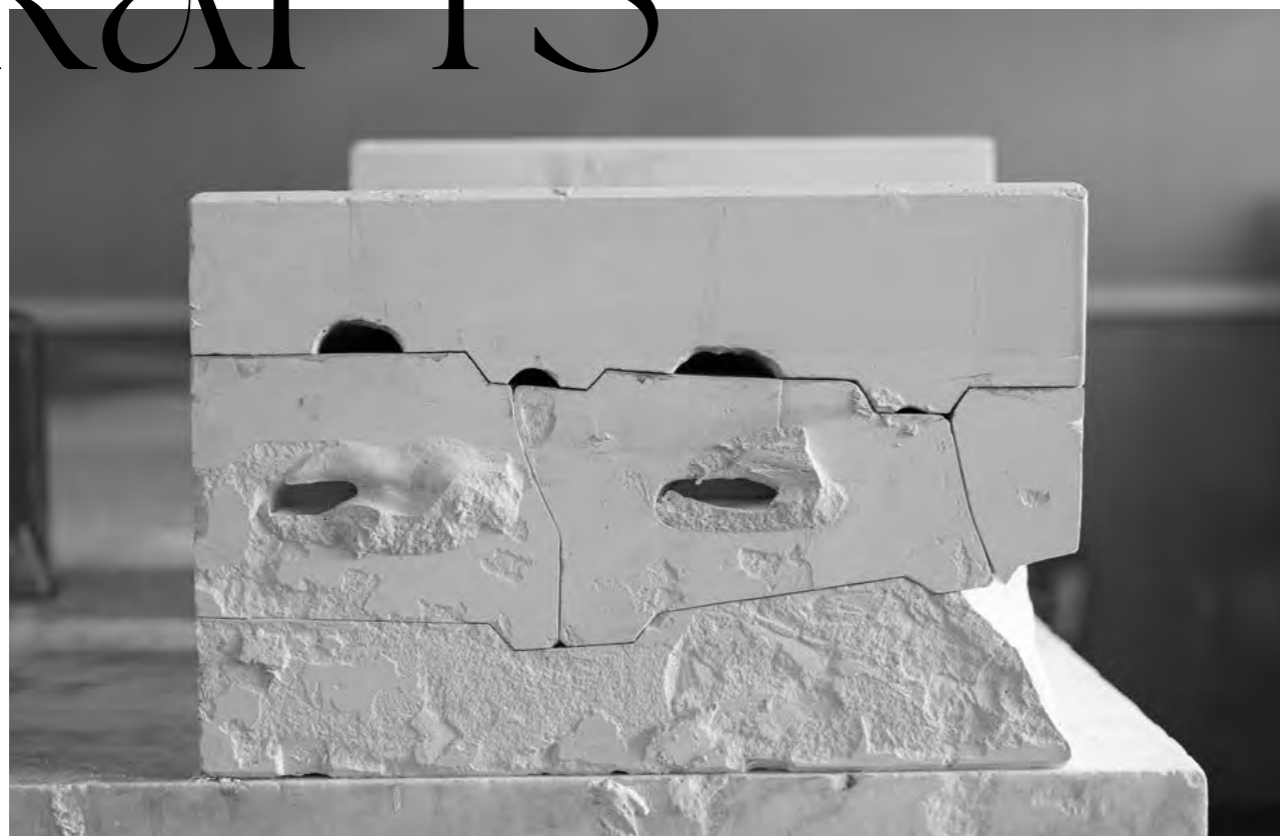
THE PORCELAIN REVOLUTION

DESIGN



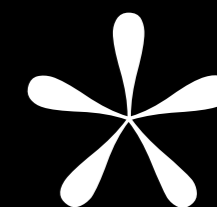
LLADRÓ

AN EXTRA MEASURE OF DESIGN, ART AND CRAFTS



BREAKING THE MOLDS OF CONTEMPORARY PORCELAIN

Following many decades dedicated to handcrafted porcelain creations, here we are compiling some prime examples of our more experimental side, born from an irrevocable need to push the envelope of porcelain and the tireless quest to fulfill this aim.





The results are creations that have evolved until becoming benchmarks of contemporary design that captivate us with their bold forms and surprising decorations.

At a moment when the connection between crafts and design is accruing more and more importance and the human touch adds incalculable value to the way a society perceives the

objects it produces, the creations on view here could be perceived as a passionate plea for the role design and art in porcelain can play in our lives. Much more than purely decorative or functional, it conveys humanity, emotion and diversity. Because, if there is one thing that reconnects us with life then that is unquestionably the beauty, character and essence of what surrounds us.



We invite you to enjoy this overview of completely diverse creations, all underpinned by a handcrafted quality that, in addition, provides a sense of continuity with our past.

LLADRÓ

DESIGN

_HANDMADE PORCELAIN





CREATIONS IN WHICH
DESIGN IS COUPLED
WITH TRADITIONAL
CRAFT PROCESSES,
REVITALIZING AND
KEEPING THEM
ALIVE, GIVING THEM
A NEW IDENTITY,
SUSTAINABILITY AND
DIFFERENTIATION.

INDEX

#ThePorcelainRevolution



DESIGN collections

12	THE GUEST BY JAIME HAYON
62	EMBRACED BY JAIME HAYON
70	THE FANTASY BY JAIME HAYON
78	EPHEMERAL TREASURES
82	KINGS OF THE SEA
86	AWESOME INSECTS
92	BOLDBLACK
98	BOLDBLUE
102	COSMIC
104	YOKAY
106	THE DREAMER BY LAOLU
110	FIERCE PORTRAITS
116	INK
122	STAR WARS
132	SUPERMAN
134	POKÉMON
136	MICKEY AND MINNIE
142	TWEETY
144	DORAEMON
146	ORIGAMI
152	BABY ANIMALS
154	CYBORG
158	RE-CYCLOS BY BODO SPERLEIN & COMMITTEE
164	FACE2FACE
166	LIFE IS FLOWER BY YASUMICHI MORITA
168	UNUSUAL FRIENDS
172	UNICORN
174	ANIMAL JEWELS
176	KAW/KI BY ALEKSANDRA ŽEROMSKA
_EDITORIAL	180 ART OF THE TABLE
	PARROT / CORAL / TOUCAN / UTOPICAL
_EDITORIAL	190 SHAPES & COLORS
	THE FLAMINGOS / STARLING / WILD TOTEMS / TURTLES
	/ THE FAMILY PORTRAIT / THE ROCKING CHICKEN RIDE /
	UNDERWATER / W/HALES / MACAW / BIRD BOXES
206	TECHNICAL SECTION

THE GUEST COLLECTION

12

A DESIGNER'S PLATFORM

"Today, art's ability to make us dream, imagine, reflect and even aspire is really important. Artistic explorations increasingly evince this special way of projecting ourselves in realities that move us and make us feel."

-Jaime Hayon

Can an artwork in porcelain have many faces, come from different countries and express itself in varied iconographic languages? Can it be the work of a single artist and at the same time the sum of many? The answer is yes, and it is known as The Guest.

The Guest is Lladró's most captivating character. Ever since its creation by the renowned designer Jaime Hayon, The Guest has been a blank canvas on which celebrated artists have intervened to tell all kinds of stories.

After seducing Hayon, the passion for detail of Lladró artisans has also won over Paul Smith, Tim Biskup, Devilrobots, Gary Baseman, Rolito.... These and other artists are invited to join a party of concepts, designs and colors, applied on the same canvas: an irreverent yet distinguished sculpture which has become a 21st-century icon.

Today these collaborations continue to demonstrate that tradition is open to experimentation and can take the most unexpected and conceptual paths.

13



INTERVIEW

WITH
JAIMIE HAYON



© Cristina Vaquero

14

THE GUEST, A BRAND ICON

15

One thing that you can claim without a shadow of a doubt is that The Guest is an icon of Lladró's New Concept category. Its designer, Jaime Hayon, talks to us about the beginnings of this transcendental project, his vision, the initial steps, the challenges ... An interview addressing the ambition and creative possibilities of porcelain in The Guest, an always unique and contemporary character.

How did The Guest come about?

I recall it as a time of frenetic activity but above all I remember exactly what I wanted to do. I had been working for several years in Hong Kong on the design of toys in vinyl and I was intrigued by the idea of customization and collecting. That's why, from the first day I started to work with Lladró, I wanted to transfer that idea from vinyl to porcelain; to take the iconographic part of urban collectible toys to more traditional porcelain. I was really attracted to the idea, because it was a kind of experiment in mixing two different worlds, of seeing what would happen, what the result would be.

And the truth is that we were very happy right from the very first tests. There was something in the sculpture, an energy, that caused a great impression, and I believe that's why it got off to such a fantastic start and has continued being such a great success.

How did you arrive at this character?

I wanted it to reflect my world and so I gave it some of my gestures. It has the forms I draw, but at the same time I also envisaged a development of the straight lines of collectible toys, without a lot of gestural quality but with strong graphics. My idea was to look for a figurative object that would have a touch where you would notice the porcelain, realize that it was not that simple, that it had a subtle gesture that shows it is handcrafted and that it would be a little human but at once not. In other words, it would be a young boy but it wouldn't be childlike, which is why it doesn't have a face or eyes ... the idea was for it to be somehow neutral. Those details were very important when it came to creating the object. And it was no easy task because the Lladró sculptors always pay such close attention to the face, which is normally so important for the expressiveness of a sculpture. A smile, a wink, or eyes looking up or down can change the message you wish to convey.

So when I said to them "don't give it a face" the response from the Lladró team was so interesting. They were shocked, but I didn't want a face because the idea is that everybody would give it their own face. And though at first it sounded a little crazy I think that in the end it is what gives the piece such strength. It is all about simplicity.

“SOMETIMES IT IS A QUESTION OF DOING LESS AND EXPLORING ONE THING IN GREATER DEPTH, MAKING IT MORE MEMORABLE.”

16

WHAT WAS IT LIKE TRANSLATING THE IDEA OF THE GUEST TO PORCELAIN?

It actually turned out to be really simple and rewarding because I discovered something that you only realize when you work with Lladró and which most people don't know, and that is that every single creation is like the actor in a movie. Everything you do to it, however small, tells a story.

The gestures are so important, and it has a lot to do with whether the fists are closed, whether it is standing or reclining and so on. The pose can transmit a sense of defeat or of determination. That is why The Guest is such a proud character, a guest who wishes to stay, who looks at you like the artist wants it to look at you. A character that can express itself through the graphics of creatives from anywhere in the world. That is the strength it has and a strength that is destined to last a long time.

COULD YOU TELL US MORE ABOUT THE COLLABORATIONS WITH OTHER ARTISTS?

The initial concept was very clear, which was to offer variety in the same creation so that collectors would want to have more than just one. That's why we had to ensure such wide creativity. And the best way to do that was through the intervention of different artists. In addition, we wanted to discover local artists, to give a voice to artists from different disciplines, to encourage the exchange of graphics. The idea was to give an opportunity to other artists to express themselves, to do with The Guest whatever they felt like doing and for this reason it has a double meaning. On one hand, it enters your home as a guest, and on the other, the guest artist who intervenes in its creatively, who renders their vision and their own story.

DO YOU BELIEVE THAT THE GUEST COULD BE EXPANDED TO OTHER CHARACTERS?

I think it's perfect as it is, because the idea of repetition has made it a brand icon. Lots of people around the world identify it with the brand and look forward to finding out who the next guest artist will be. So I don't really see the need to extend the family. The Guest could be bigger or smaller, but I don't envisage a family with new characters. But if there were, they would be equally unique, they would say different things and tell other stories. They would be actors starring in another movie.

Sometimes it is a question of doing less and exploring one thing in greater depth, making it more memorable. It is the only object that changes throughout its evolution. We shall see where it will take us, but one thing for sure is that it has a lot of surprises still in store for us.



© James Mollison

17

WITH **JAIIME HAYON**
AT **BARCELÓ TORRE DE MADRID HOTEL**

18



THE ORANGE GUEST - Little

RESTAURANTS, BOUTIQUES, HOTELS, EXHIBITIONS... JAIME HAYON IS CONSTANTLY CAUGHT UP IN THE MIDDLE OF PROJECTS THAT BEAR HIS UNMISTAKABLE STAMP IN CITIES LIKE NEW YORK, PARIS, KUWAIT, LONDON OR MADRID.

19

THE WHITE GUEST - Big





20

LLADRÓ

DESIGN

PURPLE NOW YELLOW

_THE GUEST COLLECTION



Barceló Torre de Madrid Hotel
Lobby

21

BY JAIME HAYON



22

THE GOLDEN GUEST - Little THE SILVER GUEST - Little THE GUEST BY ROLITO - Little



23

Barcel6 Torre de Madrid Hotel
Garra Bar

“

I WAS FULLY DEDICATED TO THE CREATION OF A VERY SPECIAL AND UNIQUE SPACE THAT WOULD REPRESENT A NEW VISION OF SPAIN, A VISION FAR FROM THE TRADITIONAL AESTHETIC, ASIDE FROM BEING MY HOMETOWN, FOR ME MADRID REPRESENTS SPAIN'S DIVERSITY AND RICHNESS.

”

THE ARTIST EXPRESSES HIS CREATIVITY IN THE CONCEPTION OF SPACES AND IN ALL THE OBJECTS CONTAINED IN THEM, WHETHER BIG OR SMALL. ALL ELEMENTS ARE CAREFULLY DESIGNED DOWN TO THE TINIEST DETAIL, CONVEYING HAYON'S COLORIST ENERGETIC VISION IN ATTRACTIVE YET FORCEFUL FORMS. EVERYTHING CONCEIVED TO PRODUCE PLEASING SENSATIONS AND ALSO TO RAISE A SMILE.

A GOOD EXAMPLE IS HOTEL BARCELÓ TORRE DE MADRID, A SETTING INSPIRED BY THE ROOTS, CULTURE AND HISTORY OF SPAIN, UPDATED THROUGH THE LENS OF HAYON. A MUST-VISIT PLACE IN WHICH THE GUEST IS PERFECTLY AT HOME.



THE GUEST BY TIM BISKUP - Little



Barceló Torre de Madrid Hotel
Lobby

THE GUEST BY TIM BISKUP - Little

THE YELLOW GUEST - Little



26



27

THE RED GUEST - Little
THE GREEN GUEST - Little

THE WHITE GUEST - Little
THE WHITE GUEST - Big

28



THE GREEN GUEST - Little THE GUEST BY DEVTLROBOTS - Little

29





Barceló Torre de Madrid Hotel
Suite Real

THE GUEST BY RICARDO CAVOLO - Big & Little THE BLACK GUEST - Big & Little



THE GUEST COLORS BY LLADRÓ

32

If there is one thing that characterizes Lladró's work, then that is its vast palette of colors. From pastel tones to more intense or on-trend metallic colors, the options developed by the brand to decorate on porcelain give free rein to the creativity of invited guest artists and have also allowed them to play with The Guest with all the power of monochrome. Because The Guest dazzles and captivates, whatever its color.

THE SILVER GUEST - Little
THE GUEST Little - PURPLE ON YELLOW
THE GOLDEN GUEST - Little



33

THE RED GUEST - Little
THE ORANGE GUEST - Little
THE YELLOW GUEST - Little
THE BLUE GUEST - Little
THE GREEN GUEST - Little



34



35





© James Mollison

THE BIRTH OF AN ICON

This collection started with guests designed by its creator, Jaime Hayon. The artistic universe of this Madrid-born artist, with a focus on craft and cutting-edge applied to design, is reflected in pieces full of knowing nods to key themes in the brand's history, such as love and childhood. With a subtle sense of humor, from a "boundary pusher" who believes that Lladró's savoir faire is totally unique. As he himself says, "I wanted to be part of the company's evolution, my intention was never a revolution. For several generations, its artisans have accrued control over an art form and techniques. My task was to add that extra contemporary touch".

Jaime Hayon speaks a unique yet internationally recognizable creative language. His style, which blurs the lines between art, decoration and design, impregnates everything he creates, whether it be furniture, products, interiors or art installations. The materials he chooses are always noble and with a history attached, because he knows that it gives his playful tone elegance and body. His successful trajectory led him to be included in the Times magazine list of the hundred most significant creators of our time while Wallpaper named him as one of the most influential artists of recent decades.

THE **GUEST** BY

JAIMÉ HAYÓN

Limited Edition
Size Big
01007278

Numbered edition
Size Little
01007283



THE GUEST IN FEMININE

Jade Purple Brown is known for the imagery that places women at the center of her vibrant work, with a knowing nod to Pop art. The two characters by this New York-based artist are the first female The Guest. Both capture the viewer's attention with their waves of color full of rhythm and eye-catching details that convey femininity, energy, and optimism. Like most of her creations, Jade speaks of empowerment and aspires to be a form of activism that defies stereotypes and makes the most of the power of design to give women a voice.

Brown's artistic development was driven by her formal education in marketing as well as by her personal exploration of design software during her college years. This self-taught focus, combined with the absence of any formal creative mentor, led her to experiment freely and to prioritize intuitive approaches over the conventions of established design.



38

THE GUEST BY JADE PURPLE BROWN

01008811 Limited Edition
Size Big

01008810 Numbered edition
Size Little



A CAT AND DOG PARTY

"These are pieces that I would like to have at home. Optimistic, fun, happy, full of color and sense of humor, that's what makes them Smithy." This is what Britain's foremost designer had to say about The Guest sculptures he customized for this collection and its eccentric creative universe. A cat and a dog, Lladró and Paul Smith, strewn with confetti and covered with masks, these pieces bring together two seemingly opposite poles. *"Each one is created and painted by hand in the Lladró workshops in Valencia, something which is increasingly more unusual in our computerized and mechanized world"* Sir Paul concluded.

Paul Smith is one of Great Britain's foremost designers. Known for a creative aesthetic that combines tradition and modernity, he claims that "you can find inspiration in everything", and that his references are eclectic, coming from high art and everyday life. Each Paul Smith design is underpinned by a dry British sense of humor: quirky but not frivolous, eccentric but not silly.



40

THE GUEST BY PAUL SMITH

LLADRÓ DESIGN

_THE GUEST COLLECTION

01007730 Limited Edition Size Big

01007731 Numbered edition Size Little



41

BY JAIME HAYON

PAST, PRESENT AND FUTURE



The Guest by Kzeng seeks to render his cultural roots through symbols of traditions like Chinese facial painting or flower painting from the Song dynasty, reinterpreting these elements in his own personal style. In the case of the large The Guest, for instance, he is portrayed with three big eyes on his face which, according to Kzeng, "allow him to see the past, present and future as if he were a messenger travelling through time." As regards to color, Kzeng chose blue tones on the white porcelain to ensure a sense of visual harmony and balance. He then combines these colors with touches of golden luster in order to convey the prestige associated so closely with ancient Chinese porcelain. The end results are two striking yet serene creations.

Kzeng Jiang is the first Chinese artist to join the creative universe of The Guest. Based in Shanghai, his work captures the contemporary culture of the East and big brands transformed into cult iconography through vibrant, radical illustrations.

THE GUEST BY KZENG JIANG

LLADRÓ DESIGN THE GUEST COLLECTION

01007757 Limited Edition Size Big

01007758 Numbered edition Size Little



BY JAIME HAYON

TROMPE L'OEIL ART

"The main source of inspiration for my intervention on The Guest is the study of architectural forms and the way in which they interact with space. I create trompe l'oeils applied in 2D with a 3D optical effect, playing with color and patterns." This is how Camille Walala describes her experience with our most iconic character.

After graduating in textile design, Camille Walala set up her own studio and brand in East and soon earning a name for her radical illustrations. Her enthusiasm for graphic patterns and the use of color has given shape to a highly recognizable body of work acclaimed across the globe. Her versions of The Guest are full of contrasts, combining bright colors with intricate designs. The "slightly imperfect" abstract forms and hand-drawn lines create a dynamic and powerful visual effect.



01007761

Limited Edition
Size Big

01007762

Numbered edition
Size Little

44

THE **GUEST** BY

CAMILLE WALALA

LLADRÓ

DESIGN

_THE GUEST COLLECTION



45

BY JAIME HAYON

GRAPHIC HUMOR

Artist, muralist, and illustrator Juan Díaz-Faes joins the creative universe of this iconic character with two versions decorated using his signature visual language, playful, friendly, and immediately recognizable.

Known for his black and white patterns, Díaz-Faes transforms *The Guest's* silhouette into a three-dimensional support for his unmistakable imagery. Through geometric shapes, flowing lines and looping faces, the artist from Oviedo creates a hypnotic engaging visual effect. Each line seems to move across the surface, as if the character were wrapped in a dynamic and vibrant skin.

Juan Díaz-Faes grew up drawing on paper and walls before studying Fine Arts at the University of Salamanca, Spain. He later completed a doctorate focused on the creative process, driven by his interest in understanding how ideas originate and where they come from. With a visual language that feels accessible and inviting, Díaz-Faes creates charming compositions and characters using geometric forms, lively lines, and energetic patterns.



46

THE **GUEST** BY

DÍAZ
FAES

LLADRÓ DESIGN

_THE GUEST COLLECTION

01008816 Limited Edition
Size Big

01008817 Numbered edition
Size Little

47



BY JAIME HAYÓN

LOVABLY BITTERSWEET

"The beauty of the bittersweetness of life" is how the US designer Gary Baseman describes the artistic realm he explores in his works. This mission, reflected in painting, fashion and toy design, is now taken to porcelain, as if it were yet another canvas. Bold forms are drawn in soft pink and violet, in categorical black and brown, in pieces with an otherworldly touch that ooze pure magnetism.

Gary Baseman is a multifaceted artist: painter, illustrator, video and performance artist, animator, film and television producer, toy designer and exhibition curator. He is the designer of the bestselling board game Cranium, and the animation series "Teacher's Pet", for which he won three Emmy and BAFTA awards, and earned him a place on Entertainment Weekly's list of "Most Creative People". According to The Los Angeles Time, his art is "adorably perverse".



48

THE **GUEST** BY

GARY BASEMAN

Limited Edition
Size Big

01007889

Numbered edition
Size Little

01007890

LLADRÓ

DESIGN

_THE GUEST COLLECTION



49

BY JAIME HAYON



01007752 Limited Edition
Size Big

01007753 Numbered edition
Size Little

VISUAL POETRY

The Guests by Henn Kim, a rising star of contemporary illustration, speak to us of the world in which we live and our role in it. In the large The Guest, galaxies and stars symbolize the vastness of our always captivating planet. In the small The Guest, with a sticking plaster over a heart and flowers, she conveys the sensation that, although there is often suffering, life always flourishes.

The South Korean illustrator Henn Kim looks on creativity as a form of emotional freedom. Based on poetic minimalism in black and white, her works are able to capture complex feelings with just a few brushstrokes, and make us think. The originality of her creations, popularized thanks to the expansive power of social media, has made her one of the most outstanding voices in today's creative universe.

50

THE GUEST BY HENN KIM

LLADRÓ

DESIGN

_THE GUEST COLLECTION



51

BY JAIME HAYON

LIGHTING UP DREAMS

Imagine a superhero of the night who, together with his partner, protects sleepers and wards off nightmares. This is The Guest by Rolito, the celebrated French designer and illustrator, who borrowed inspiration from his own son to personalize this couple of sculptures. "Working with Lladró was wonderful. They gave me the freedom to create with the fantastic organic material of porcelain. I concentrated on the textures because everything is painted by hand." With his magic pajamas and shiny feet, "he is a character who manages to make you feel safe and protected", he added.

Rolito is a character designer, illustrator and art director based in Europe. After completing multidisciplinary Beaux Arts studies in France, Rolito joined an innovative multimedia studio at the forefront of web content development. The first version of his personal website, Rolitoland, was a flash-animated microcosm that showcased his unique imagination, winning him many awards and accolades in festivals worldwide. This led him to collaborate with Sony Japan in the world of video games and ever since this artist has never stopped growing.

THE GUEST BY ROLITO

LLADRÓ

DESIGN

_THE GUEST COLLECTION



01007897
Limited Edition
Size Big

01007898
Numbered edition
Size Little



BY JAIME HAYON



PURE TOY AESTHETICS

Perfectly combined polka dots and stripes, cheerful colors and the sobriety of black, the pure Japanese toy aesthetic of Devilrobots is now transferred to Lladró porcelain. The artistic team who helped define the era of designer toys with their character To-Fu Oyako is behind this pair of The Guest. Bold, fun and extravagant, according to their creators, they express "a desire to speak about new paths and journeys."

Devilrobots is a Japanese design team specialized in character designs, illustrations, motion graphics and web art. As the creators of the recognizable To-Fu Oyako, one of Japan's most popular contributions to the toy world, they have demonstrated how a simple character can be turned into a useful and emotive medium.

54

Limited Edition
Size Big

01007280

Numbered edition
Size Little

01007285

THE GUEST BY DEVILROBOTS

LLADRÓ

DESIGN

_THE GUEST COLLECTION



55

BY JAIME HAYON

LEGENDS & FANTASY

“When I received the invitation to create pieces for *The Guest* collection I knew that I would have to give the best of myself in order to be up to the challenge”. And he gave it his best. For these pieces the internationally renowned Spanish illustrator Ricardo Cavolo envisaged breath-taking imagery based on legends, fantasy nature and tattooed beings. And Lladró artists masterfully rendered his unique powerful iconography. Interestingly, here he depicts his own son and wife. His wife as a beautiful Armenian queen conveying strength, light and energy. And he places his son in a fantasy world of mountains, flowers, volcanoes and stars.

Ricardo Cavolo, after graduating in Fine Art and teaching drawing, entered the art world thanks to the passion transmitted by his father for handcrafted processes. His work is characterized by a faux naïf style applied using traditional techniques like colored pencils, watercolors or liquid inks. His illustrations speak of a powerful imagination, full of color and messages, and have won him a growing reputation among young audiences.



© Marina de Luis

Limited Edition
Size Big

Numbered edition
Size Little

01007747

01007748

56

THE **GUEST** BY

RICARDO CAVOLO

LLADRÓ

DESIGN

_THE GUEST COLLECTION



57

BY JAIME HAYON

01007279 Limited Edition
Size Big

01007284 Numbered edition
Size Little



© Justin Sullivan

58 HIDDEN MESSAGES

For the US artist Tim Biskup, The Guest project is “an elegant way of fusing fragmented geometric forms with the unquestionable artistic quality of Lladró’s work.” His ground-breaking theories in color and design are based on what he calls a ‘populist esthetic’. And a secret: the drop on the small Guest is not a teardrop, but a symbol of connection with nature.

Tim Biskup is a multidisciplinary artist long recognized for his complex color and design theories and decidedly populist aesthetic. Over recent decades, his exhibitions in galleries and museums throughout the world have won him a legion of fans and collectors, propelled further by his steady output of limited edition prints, vinyl figures, books, records and other objects.

THE GUEST BY TIM BISKUP

LLADRÓ

DESIGN

_THE GUEST COLLECTION



59

BY JAIME HAYON

WATER AND SUN

Guillaume Grando, aka Supakitch, is the creator behind two The Guests that seem to be rising from the water. And this is precisely the effect the artist was after, to capture the wealth of the plays of color of sunlight on the surface of water. A goal clearly achieved in these pieces, the first in the collection to have volume, that seem to rock us to the hypnotic rhythm of the waves.

Supakitch started off as a graffiti artist in the early-nineties and, since then, the fluidity called for by graffiti has been instrumental in shaping the sinuous brushstroke of his work. His creative projects focus on gesture, movement, liquid material, color and reflections of light.



© Jean-Christophe Camuset

60

01007755 Limited Edition Size Big

01007756 Numbered edition Size Little

THE GUEST BY SUPAKITCH

LLADRÓ DESIGN

_THE GUEST COLLECTION

61



BY JAIME HAYON

Embrace by J.HAYON

62

EMBRACE YOURSELF,
EMBRACE HAPPINESS.



63

ABOUT & EMBRACED

EMBRACED PINK
>>>

64



A NEW DESIGN ICON

After creating *The Guest*, one of Lladró's most iconic characters, Jaime Hayon has collaborated with the brand once again in a creation called *Embraced*.

Embraced portrays a charming character hugging himself. In the words of the artist: "it represents to perfection the idea of looking after yourself. The character in *Embraced* is contorted to completely wrap around himself and be at one."

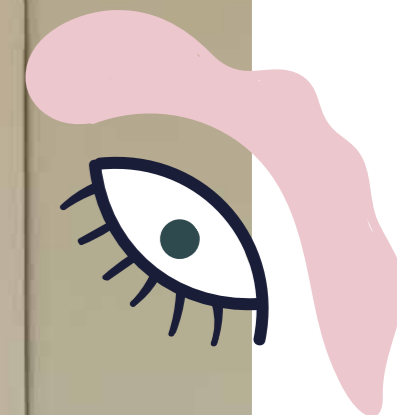
Embraced comes in three versions, one decorated with Hayon's signature designs while the other two are monochrome versions in soft pink and yellow colors.

LLADRÓ DESIGN

_EMBRACED



65



BY JAIME HAYON

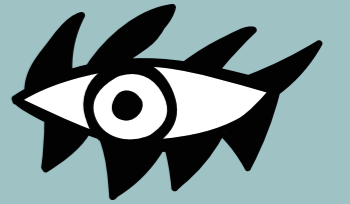


66



“IF WE DON’T LOOK
AFTER OURSELVES,
HOW CAN WE LOOK
AFTER OTHERS?”

JAIME HAYON



67



BY JAIME HAYON



EMBRACE YOURSELF WITH HOPE AND OPTIMISM



<<< EMBRACED PINK AND YELLOW



AN ARTISTIC CHALLENGE

With Embraced, Jaime Hayon reinforces Lladró's commitment with the protection and enrichment of its craft legacy through contemporary and conceptual designs.

In this creation Hayon was looking for the beauty of the form and, more particularly, meaning and symbolism.

THE FANTASY COLLECTION

by Jaime Hayon



70



THE LOVER III >>>

LLADRÓ

DESIGN

#THEPORCELAINREVOLUTION

71



CREATIONS WHICH, EXPRESSED IN THE LANGUAGE OF LLADRÓ PORCELAIN, ITS KNOW-HOW AND UNIQUE ARTISAN PROCESSES, TAKE ON THE CATEGORY OF WORKS OF ART. PIECES THAT DEMONSTRATE LLADRÓ'S ABILITY TO GIVE FORM AND COLOR TO FANTASY.

72



^ SMALL CONVERSATION VASE
THE CLOWN LAMP >>>

LLADRÓ DESIGN

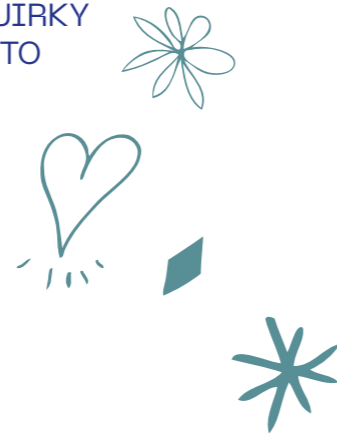
_THE FANTASY COLLECTION

73



LOVE, FAMILY, CHILDHOOD, THE CIRCUS...

THE CORE LLADRÓ THEMES ARE FILTERED THROUGH THE SPANISH DESIGNER'S QUIRKY SENSE OF HUMOR AND TRANSLATED INTO UNIQUE DESIGNER OBJECTS.



74



THE ROCKING CHICKEN RIDE >>>

LLADRÓ DESIGN

_THE FANTASY COLLECTION

75



76



77



>>> THE LOVER II + CONVERSATION VASE I
^ CONVERSATION VASE II

EPHEMERAL TREASURES

COLLECTION BY DULK

Limited Edition:
200
units

78



LLADRÓ

DESIGN

#THEPORCELAINREVOLUTION

A call to action to protect our planet through art.

In Ephemeral Treasures, the artist Antonio Segura Donat, known as Dulk, merges his passion for nature with his artistic mastery in two iconic pieces created in collaboration with Lladró: Soul Rider and Ephemeral Treasures. This collection is a reflection of the fragility of ecosystems and the urgent need to protect them. Each piece is like a dreamlike window into a changing world, where endangered species coexist in a delicate and ephemeral balance.

79



_DULK



^ AHSOKA TANO
> QUEEN AMIDALA IN THE THRONE ROOM

LLADRÓ

DESIGN

_EPHEMERAL TREASURES

Limited Edition:
200
units



_DULK

KINGS OF



KINGS OF THE SEA IS A TRIBUTE TO THE STRANGE, VARIED, AND NUMEROUS CREATURES TO BE FOUND IN THE DEPTHS OF THE SEA. CREATIONS THAT STAND OUT FOR THE STRIKING DECORATION WITH INTENSE AND BRIGHT COLORS. A LOBSTER AND A CRAB THAT LOOK LIKE TWO FIERCE KNIGHTS IN ARMOR READY TO DEFEND ANY JUST CAUSE. SURPRISING AND SYMBOLIC ANIMALS HANDCRAFTED IN PORCELAIN.

THE SEA

LLADRÓ

DESIGN

#THEPORCELAINREVOLUTION

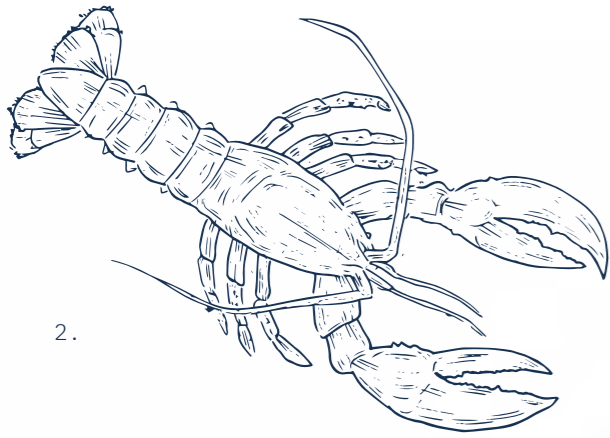
1.

The scientific name of the black boxfish is Procamburus clarkii of the genus Acociles.



83

> CRAB



2.

84



> LOBSTER

2.

Hommarus gammarus is a large crustacean most commonly referred to as a lobster.



85



AWESOME



CREATIVITY AS A VEHICLE FOR EXPRESSION, TO CONVEY MESSAGES OR DECLARE IDEAS. THE RESULT OF AN ONGOING DIALOGUE BETWEEN NATURE, DESIGN AND PORCELAIN. THIS COLLECTION OF INSECTS CAN BE ALL THESE THINGS AND MORE. THIS SERIES OF INSECTS EXTOLS AND PAYS TRIBUTE TO THE MOST IMPORTANT CREATURES IN OUR ECOSYSTEM.

INSECTS

LLADRÓ

DESIGN

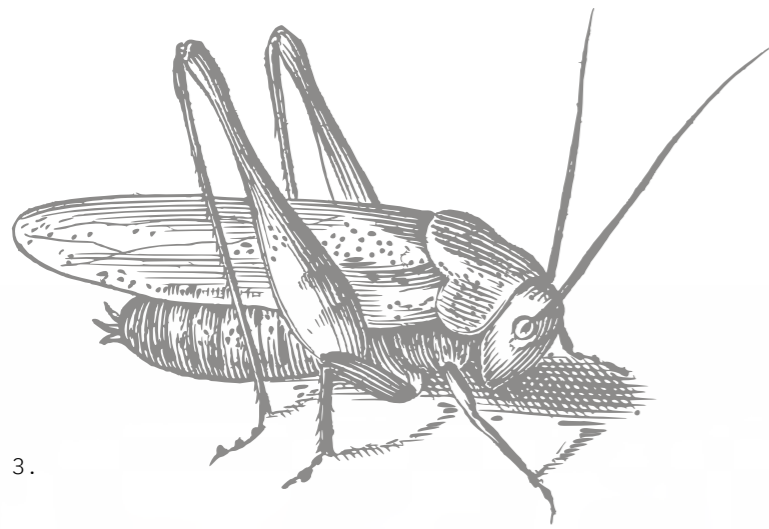
#THEPORCELAINREVOLUTION



87

> HERCULES BEETLE
>> DRAGONFLY

MADE IN HANDCRAFTED PORCELAIN AND METAL, DECORATED WITH PEARLY LUSTERS, THE PERFECTION OF THE COLORS AND TEXTURES MAKES THEM IDEAL TO GIVE AN INTERIOR DEEPER MEANING AND A PLAYFUL TOUCH.



3.

88



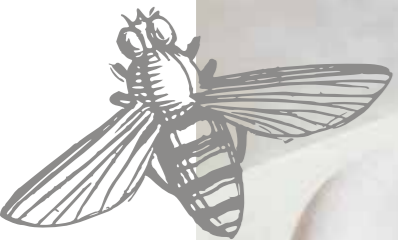
89

3.

Caelifera, commonly known as grasshoppers.

>>> GRASSHOPPER

CREATURES THAT CONNECT US WITH MOTHER NATURE
AND THE PROFOUND MEANING OF LIFE.



4.



90

^ BEE

4. *Anthophila or commonly known as bees, are the pollinizing species par excellence. These little insects play a crucial role in our ecosystem.*

LLADRÓ

DESIGN

_AWESOME INSECTS



91

BLACK

Limited Edition:
1000
units

BOLD

92

✓ LEADING THE WAY BLACK · GOLD





^ KOALA · BLACK · GOLD

Everything depends on the color of the lens through which we view the world. Lladró artists have understood the deeper meaning of this truism and have used it to give new life to some of its most successful creations with bold and radically new coloring. Two emphatic yet elegant tones like black and gold are combined to give the pieces a totally different and more contemporary look.



^ OWL



^ TŌUCAN



Limited Edition:
1000
units

MACAW BIRD BLACK-GOLD

BLUE

Limited Edition:
500
units

98

BOLD

In this collection Lladró has exchanged canvas for porcelain to explore the expressive strength of the most ultramarine blue in its palette. Striking sculptures steeped in Klein blue add a powerful note of color to any interior.

v KOI BLUE-GOLD



Limited Edition:
500
units

100



101

Made in limited editions, the matte and satin finishes enhance the forms and textures of the animals while the touches of golden luster underscore their most characteristic elements.

COSMIC COLLECTION



When design becomes a way of talking about the future, collections like Cosmic emerge. Inspired by all those women who have challenged the limits of space exploration and science, this collection looks toward new horizons through imagination, curiosity, and a spirit of exploration.

* Cosmic is born from the idea of trusting the path we choose and the value of those who join us along the way.





104



妖怪

A LIVING TRADITION



105

For centuries, Japanese folklore has told stories of yōkai, supernatural creatures associated with spirits, forces of nature, and unexplained phenomena.

Today, we reinterpret this ancestral universe in porcelain through creations that connect the symbolic power of Japanese tradition with the contemporary language of design.



DREAMER

LÁOLÚ

106



The Dreamer is the result of the first collaboration with Laolu Senbanjo, a renowned New York-based Nigerian artist. Senbanjo's work, which combines influences from the Yoruba culture from Nigeria with a more contemporary treatment, is expressed in porcelain with two creations that capture to perfection the codes of his creative world.

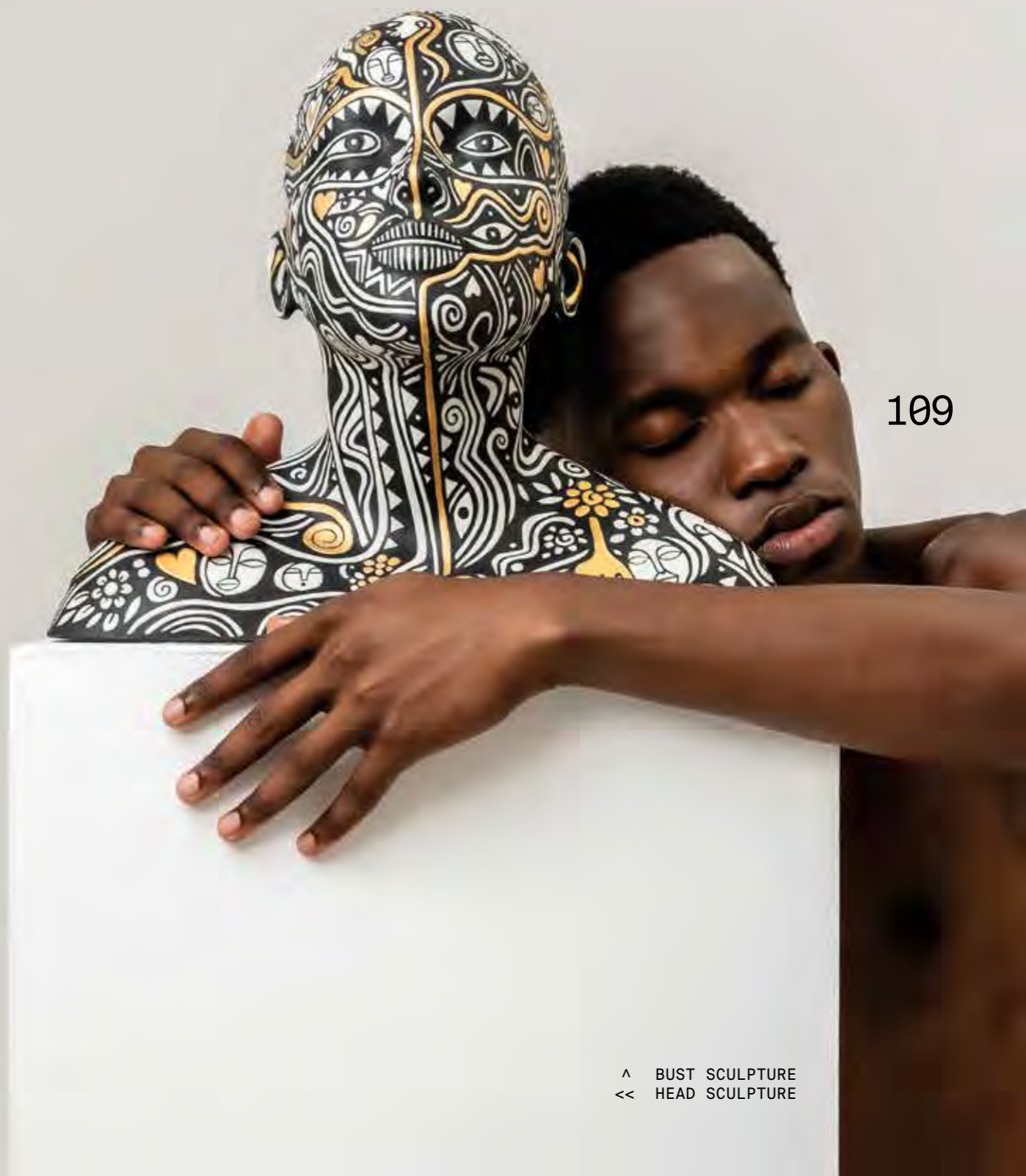


107

Laolu Senbanjo, also known as "Laolu NYC," is a Nigerian bred, Brooklyn based visual artist, musician, human rights lawyer and activist. Here, his unique graphic language is coupled with the sculptural form to give rise to a singular work with the personal stamp of a committed artist.



Comprising a head and a bust, The Dreamer by Laolu plays with the artist's signature geometric patterns in black and gold on white porcelain.



109

^ BUST SCULPTURE
<< HEAD SCULPTURE

FIERCE PORTRAITS

110

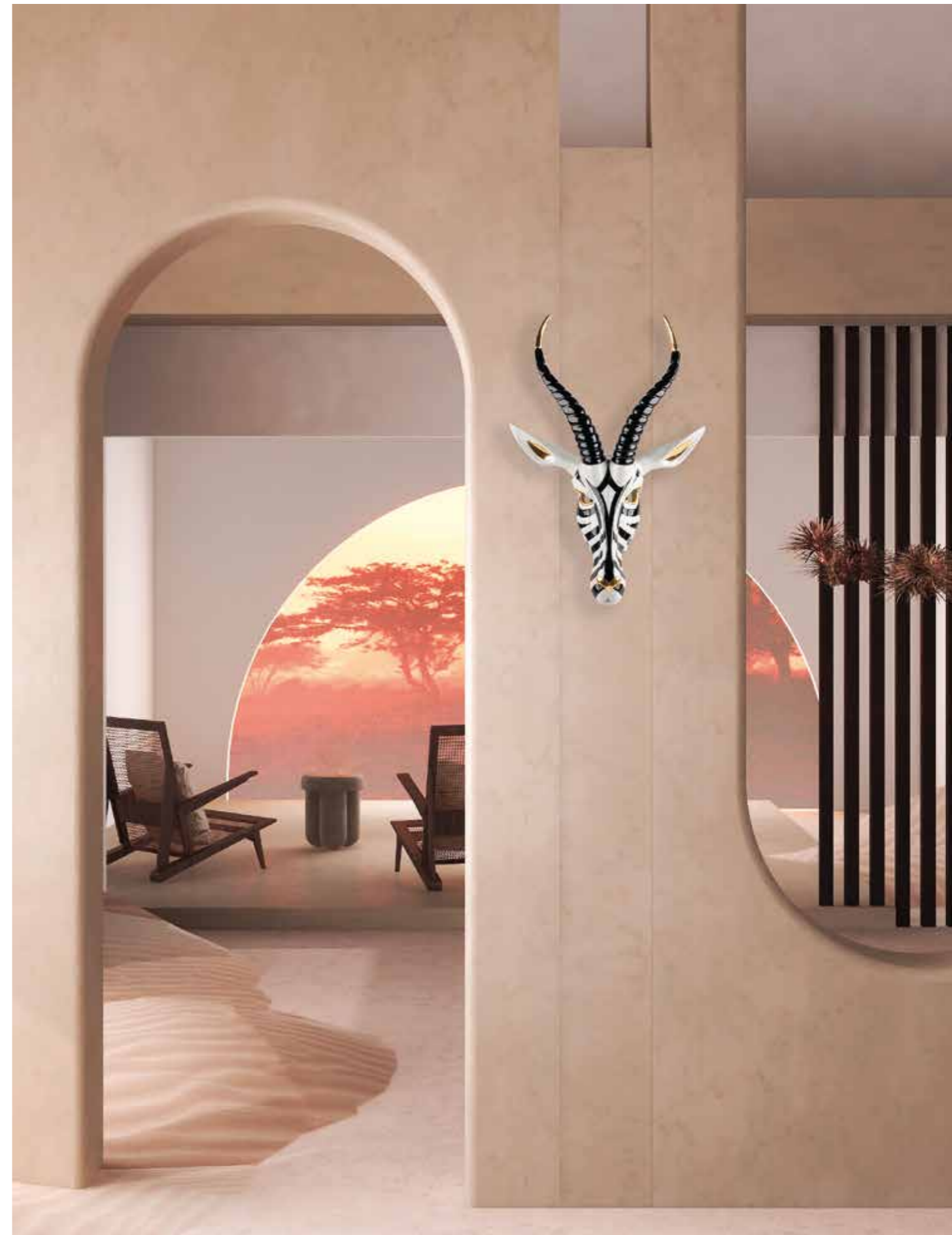
ANCESTRAL YET
THOROUGHLY
MODERN

>> ANTELOPE MASK BLACK · GOLD

LLADRÓ

DESIGN

#THEPORCELAINREVOLUTION



THE AFRICAN LOOK OF LLADRÓ ANIMAL MASKS IS BASED ON PURE EMOTION AND STRENGTH.



112

^ LION MASK BLACK · GOLD
> BUFFALO MASK BLACK · GOLD



113

WITH THEIR POWERFUL GEOMETRY IN BLACK AND WHITE AND THE SOPHISTICATED TOUCH OF GOLDEN LUSTER, THESE FIERCE PORTRAITS ARE CHARGED WITH SHEER MAGNETISM.

BETWEEN REALIST AND CONCEPTUAL, THE MASKS CAN BE HUNG ON THE WALL OR PLACED ON A TABLETOP USING A SPECIAL SUPPORT DESIGNED FOR THAT PURPOSE.



114

A FIERCE GAZE OBSERVING
US FROM THE WALL.

^ ANTELOPE MASK BLACK · GOLD

LLADRÓ

DESIGN

_ FIERCE PORTRAITS



115

TAG US @LLADRO

#THEPORCELAINREVOLUTION
#BREAKINGTHEMOLDS

^ MANDRILL MASK BLACK · GOLD

Ink

Photography
© Vincent Urbani

116



> DAGGER AND ROSE

ETCHED
THE

ON
SKIN

Creativity is eclectic and diverse, with different sources of inspiration overlapping to produce surprising results, as in the case of the Ink Collection, a series of creations indebted to US illustrations from the 1930s and legendary old school tattoos.

LLADRÓ

DESIGN

_INK COLLECTION



117



118



From designs on the skin to three-dimensional volumes in porcelain. Bright colors and bold lines applied on pieces that transfer urban trends to interior design.

LLADRÓ

DESIGN

_INK COLLECTION

Etched



119

on the skin

^ WILD PANTHER

Just like their source of inspiration, they are indelible symbols and unique messages.



120



> TRUE LOVE

*Tattoos speak in a distinctive personal language.
Urban trends through the lens of porcelain.*

121

STAR WARS

TM

122



> GROGU
>> C3PO

Craftsmanship, cinema and design are brought together in a process of exploration and divergent thinking to create a collection dedicated to the leading characters from the famous *Star Wars* saga. The series includes heroines like Queen Amidala™ or Ahsoka Tano™, as well as the adorable Grogu™, the terrifying Darth Vader™, or the fearsome galactic Stormtroopers™.

LLADRÓ

DESIGN

_STAR WARS

© & ™ Lucasfilm Ltd.



123

> C3PO



^ STORMTROOPER II
> STORMTROOPER



> DARTH VADER HELMET
>> DARTH VADER BLACK

126



LLADRÓ

DESIGN

_STAR WARS

127



> REY
>> PRINCESS LEIA'S NEW HOPE

128



LLADRÓ DESIGN

_STAR WARS

These characters from a galaxy far, far away have gone on to become part of the collective imagination of successive generations and speak of the influence of the movies on popular culture and contemporary design.

129



> HAN SOLO
>> R2-D2

LLADRÓ DESIGN

_STAR WARS



^ AHSOKA TANO
> QUEEN AMIDALA IN THE THRONE ROOM

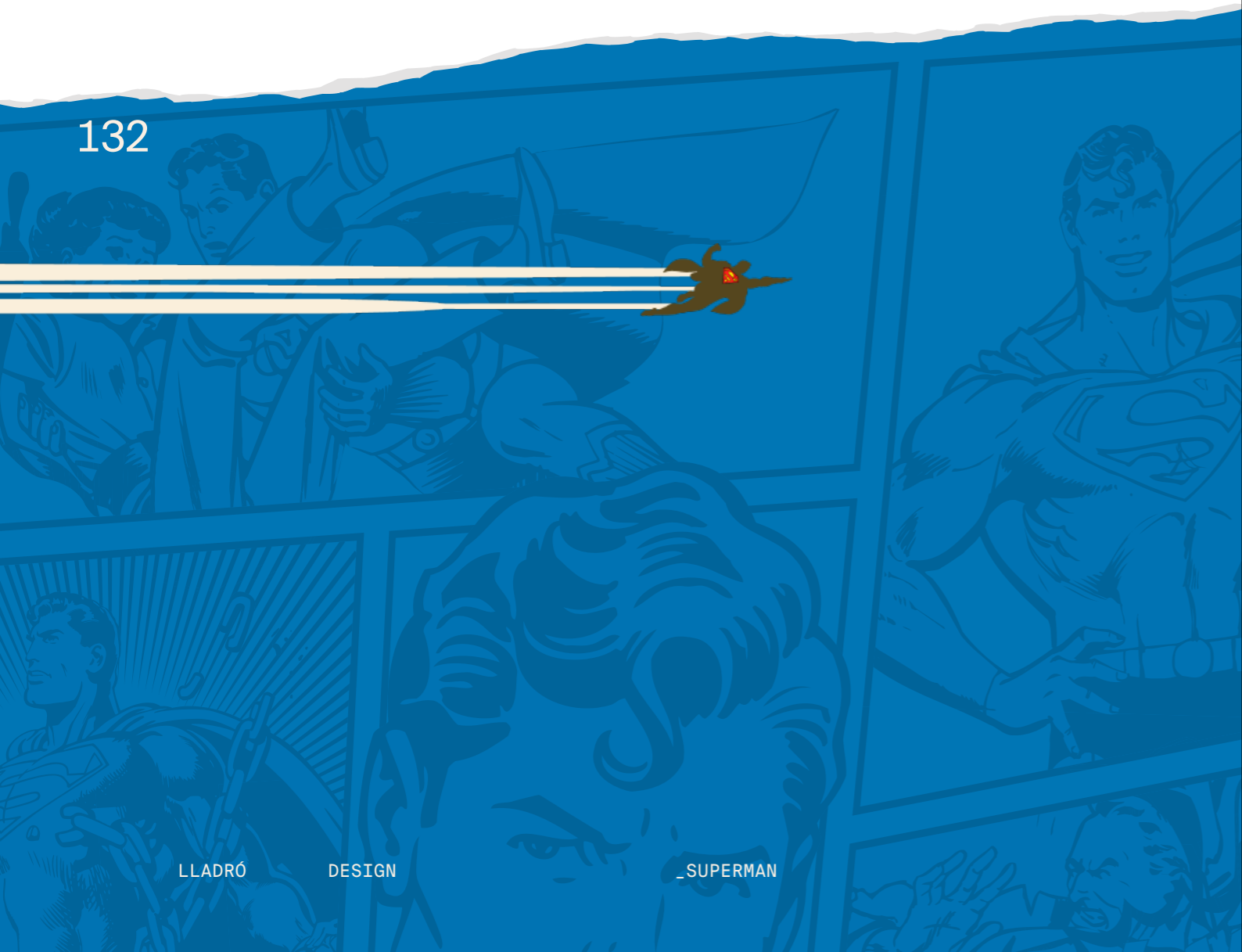




SUPERMAN

A red cape, an "S" on the chest, and we instantly know who we are talking about. We approach the hero as an attitude, as a symbol of determination, integrity, and confidence in the future. Bringing Superman into porcelain is our way of playing with the contrast between power and icon, between pop culture and craftsmanship. Our language applied to one of the greatest characters of all time.

132



LLADRÓ

DESIGN

_SUPERMAN

Limited Edition:

500
units

133





©2026 Pokémon. ©1995-2026 Nintendo/Creatures Inc./GAME FREAK Inc.

POKÉMON™



^ PIKACHU

THE RESULT IS A SHARED MOMENT, CAPTURED IN PORCELAIN, WHERE THE POKEMON UNIVERSE MEETS LLADRO'S ARTISANAL SENSIBILITY.

TWO POINTED EARS, A LIGHTNING BOLT-SHAPED TAIL, AND A COLOR THAT NEEDS NO INTRODUCTION. PIKACHU STOPPED BEING JUST AN ANIMATED CHARACTER LONG AGO AND BECAME A GLOBAL SYMBOL FOR AN ENTIRE GENERATION.

IT ACTIVATES MEMORIES, EMOTION, AND CONNECTION. BRINGING IT INTO PORCELAIN HAS BEEN A WAY OF MAKING IT TANGIBLE AND TRANSLATING ALL THAT IDENTITY THROUGH OUR OWN LANGUAGE.

Mickey and Minnie

136

©Disney



LLADRÓ

DESIGN

#THEPORCELAINREVOLUTION

Revisiting icons, working with their unmistakable forms and using the influence of design to give them a new meaning.

Brands that join forces, each one contributing its own particular know-how. Combinations that lead to creations updating all-time favorite characters.

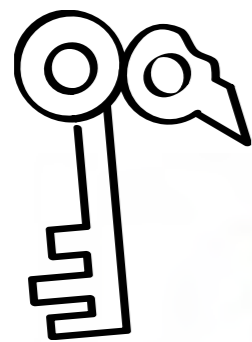
137



> MICKEY MOUSE PLATINUM

The creative approach is based on the technique of animated cartoons and drawings in black ink on white or plays with monochromatic finishes. And so, Mickey and Minnie are presented here decorated with drawings, painted by hand on porcelain or with magnetic silver luster.

Revisited icons



< MICKEY IN BLACK AND WHITE
> MINNIE IN BLACK AND WHITE

140



> MICKEY TOTAL BLACK
< MINNIE TOTAL BLACK

141





TWEETY



143

^ TWEETY

Tweety is one of the funniest and friendliest characters in pop culture, instantly recognizable for his huge eyes, his lively expression and his bright yellow color.

This handcrafted porcelain creation depicts him faithfully and is as cute and irresistible as Tweety himself. It is decorated in yellow combined with touches of matte and glazed golden luster applied in the iris of his eyes, eyelashes and legs. It rests on a wavy base also handmade in black matte porcelain.

A true icon of animated cartoons, Tweety is unmistakable and charismatic, and continues to charm people of all ages, generation after generation.

Doraemon



^ DORAEMON

There are characters that have been finding their way into our lives for decades. Doraemon is one of them, with his humor and impossible gadgets.

We simply couldn't resist bringing him into our porcelain world. We have interpreted his pop energy through the language of our material and our handcrafted processes, materializing one of the greatest icons of manga and anime.



ORIGAMI

146 > HORSE MATTE BLACK

LET'S FOLD!

THE JAPANESE ART OF PAPER FOLDING IS TRANSFERRED TO EXQUISITE PORCELAIN. IN THE ORIGAMI COLLECTION, LLADRÓ MOVES AWAY FROM THE REALIST TREATMENT OF FORMS TO EXPLORE A MORE GEOMETRIC REINTERPRETATION OF THE ANIMAL KINGDOM.

LLADRÓ

DESIGN

#THEPORCELAINREVOLUTION

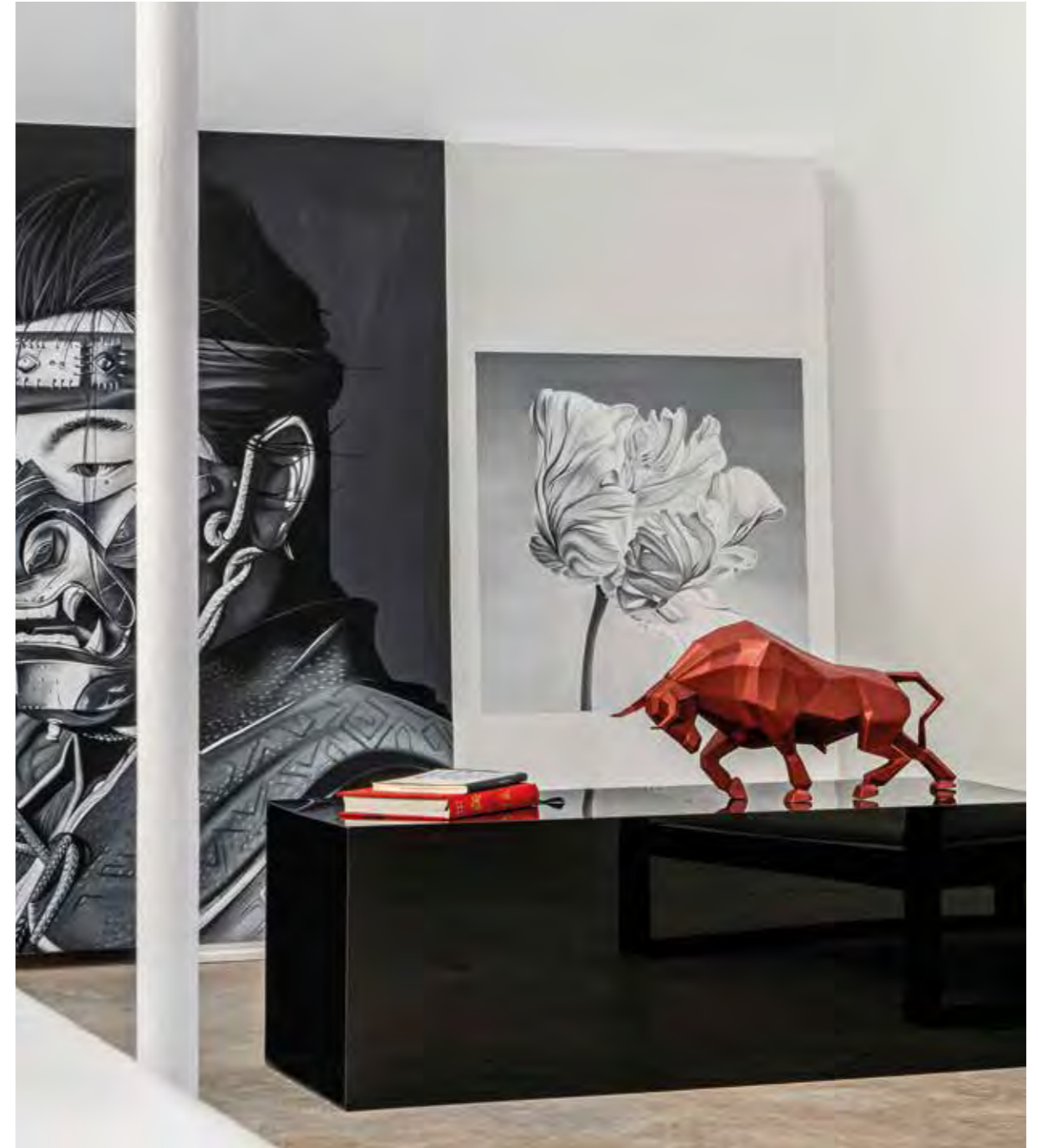


148



**THE STRAIGHT LINES AND SURFACES
ENTAIL A TWOFOLD CHALLENGE WHEN
REPRODUCED IN A LIVING, CHANGING
MATERIAL LIKE PORCELAIN.**

149



> ELEPHANT BLUE
v LION MATTE BLACK

150



LLADRÓ

DESIGN

_ORIGAMI COLLECTION



151

BABY ANIMALS

152



The Baby Animals collection, a charming and fun version of the twelve signs of the Chinese zodiac. The animals, which have the power to shape the character and even the fate of people born under their influence, are portrayed from a more child-like perspective. These depictions bring us closer to the age-old tradition of Chinese culture, with all its mystery and fascination, in a highly personal way.

<< BABY SNAKE
<< BABY DRAGON
v BABY HORSE

153



CYBORG

154



LLADRÓ

DESIGN

_CYBORG COLLECTION

155



IN A WORLD INCREASINGLY MORE ACCUSTOMED TO INCREDIBLE SCIENTIFIC ADVANCES, ART CONTINUES TO COME UP WITH NEW AND UNEXPECTED REALITIES, LIKE IN THE CYBORG COLLECTION. HALF- ANIMAL HALF-MACHINE, THESE CREATIONS ARE A PRODUCT OF THE IMAGINATION AND THE IDEA OF A WORLD IN WHICH LIVING BEINGS AND ROBOTS COMPLEMENT EACH OTHER.

< MACAW BIRD CYBORG

156



157

Re-Cyclos

158 Committee



Born in Northampton and London respectively and trained at the Liverpool Art School, Clare Page and Harry Richardson are the members of the Committee creative team. They work with the concept that objects which supposedly have already fulfilled the function they were created for, take on a new life. They explore the everyday with what they call "a combination of pragmatism and imagination".



159

Love is blind, but, when it lasts, it opens your eyes and covers you in flowers.

2

POETRY & HUMOR



160

This is how love is envisaged by Claire Page and Harry Richardson, the British couple behind Committee, the designers of the second instalment of the Re-Cyclos project, in which Lladró flowers take on a special focus.

LOVE II · BLOSSOMS

LLADRÓ

DESIGN

_RE-CYCLOS COLLECTION

BLIND AT THE BEGINNING

FARSIGHTED WITH TIME



161

Their mission was not to renew a classical image but to expand its meaning, adding details that would give it new life. In the case of Love I, II and III they take us on a journey through the various stages of love, blind at the beginning but farsighted with time. The creative duo demonstrated that the most classical elements can spark groundbreaking designs.

LOVE III · BLOSSOMS

COMMITTEE

IN NATURE NOTHING IS CREATED
OR DESTROYED,

EVERYTHING IS TRANSFORMED.



^ CANVAS VASE FLOWERS TAPESTRY

This wonderful concept gave rise to the Re-Cyclos project by Lladró, whose first instalment was signed by Bodo Sperlein. The German designer gave new life to pieces using some of the core elements from the brand's creations. Fairies that take over chandeliers, lamps covered with birds, bottle tops with animal heads, vases shrouded with flowers or birds transformed into delicate jewelry. Existing creations taken from their original context and given a new function are the cornerstones of pieces that expand the brand's creative horizons in surprising new designs with heightened artistic virtuosity.

Bodo Sperlein



Bodo Sperlein gained his experience and developed his professional career in the United Kingdom. His work has always focused on the industrial possibilities of porcelain and ceramics. Sperlein has frequently used porcelain flowers made expressly by British artisans, thus maintaining a tradition almost extinguished in the UK. It was this fact that made Lladró think about working with this artist in the Re-Cyclos project, viewing his creation as being in perfect synchrony with the brand spirit. In fact, the union of Bodo Sperlein and Lladró in Re-Cyclos could well be seen as a true symbiosis.

FACE FACE

164



FACE2FACE
> HUMMINGBIRD
>> SPARROW
>>> TOUCAN

LLADRÓ

DESIGN

#THEPORCELAINREVOLUTION

165



LIFE IS FLOWER

by Yasumichi Morita

Morita is a renowned interior designer behind many major award-winning projects in cities like Tokyo, London and New York. His conception of the spaces and objects he creates is based on an aesthetic that combines minimalism with sumptuous, elegant materials.

Limited edition:
100
units

166



Life always finds a way. Flowers that blossom in each successive cycle represent hope in nature's infinite power to be born anew. The celebrated Japanese designer Yasumichi Morita expresses this wonderful message in a work made for Lladró and inspired by the brand's famous flowers, handmade petal by petal.



167

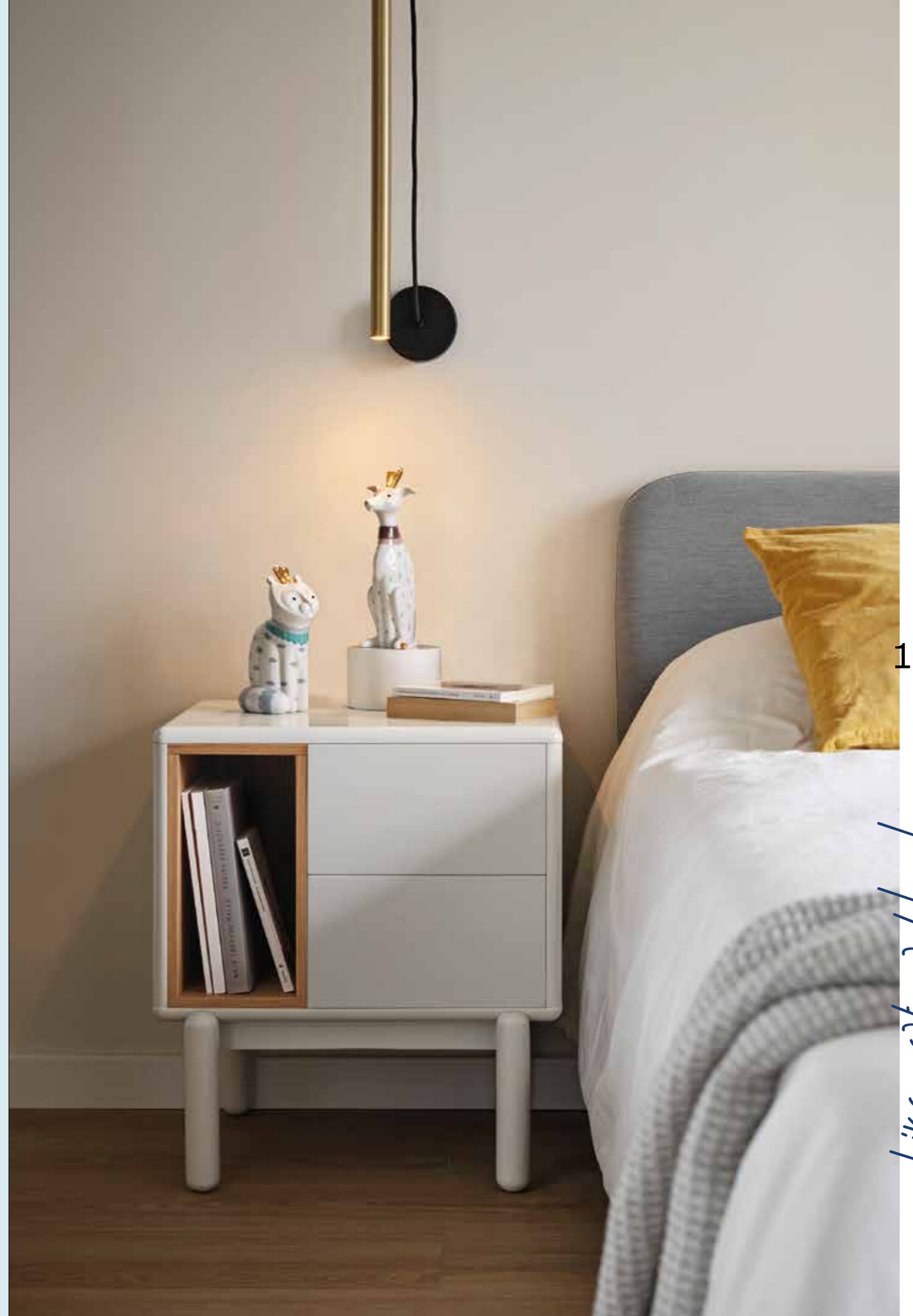
UNUSUAL FRIENDS

168

LIKE CAT AND DOG.

There are relationships that seem to be condemned to permanent conflict, proverbially incompatible and irreconcilable but that nevertheless sometimes turn out to be unexpectedly friendly.

This collection is an homage to the whimsical and playful spirit of nature, to that wonderful quality of life that means that things often turn out different than we supposed. A tribute to the capacity for surprise and imagination turned into beauty, art and porcelain.



169

Like cat and dog.

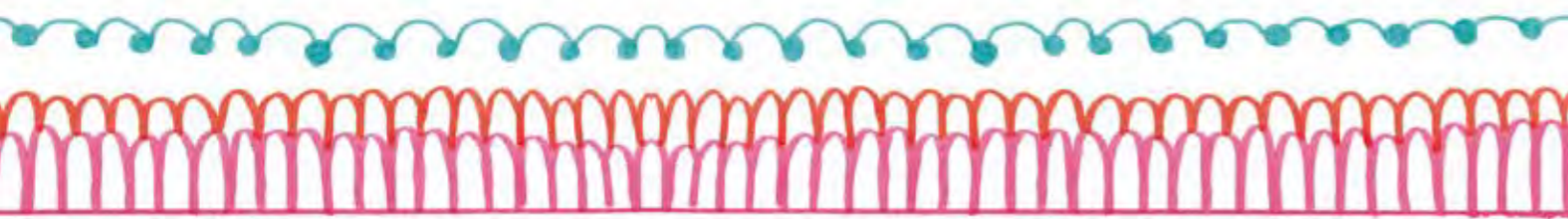


170

^ UNUSUAL FRIENDS-CAT



^ UNUSUAL FRIENDS-DOG



Like Cat and Dog



171

UNEXPECTEDLY HARMONIOUS RELATIONSHIPS.
Sometimes things are not as they seemed doomed to be.

UNICORN

A porcelain balloon. Unicorn takes a universal childhood object and transforms it into a piece where volume, shine, and color are redefined through the language of design.

Rounded shapes, pearlescent luster, and soft-toned details balance humor, simplicity, and presence. An entirely handcrafted creation that shows how porcelain can reinterpret everyday references and turn them into contemporary objects.

172

UNICORN >



173

ANIMAL JEWELS

174



Animals Jewels collection presents a series of original designs inspired by the forms of nature and crafted with the essence of genuine handcrafted porcelain jewelry. Clean, geometric lines inspired by Art Deco and a decoration dominated by abyssal black, pearly gray, and golden luster, with accents in emerald green or sapphire blue, shine in these sophisticated and timeless creations, destined to become a legacy you will not want to part with.



Creations with the
spirit of jewelry
handcrafted in
porcelain.

<< SQUIRREL JEWEL
^ FOX JEWEL

KAWKI

by ALEKSANDRA
ZEROMSKA



176 BIRDS, COFFEE
AND FANTASY
>>> COFFEE SET KAWKI



The sources of inspiration behind the Polish designer Aleksandra Żeromska's creations can be found in her love for animals and her passion for the culture and the folklore of her home country. She then filters these roots through her imagination in order to render them in collections like KAWKI.



177

Kawki, which exemplifies to perfection the possibilities of functional porcelain, takes its name from a Polish word that can mean a small coffee or a kind of bird. Playing with this connection and a graphic style that brings to mind colorful Slavic illustrations, the artist gives this coffee set a whole plethora of different meanings.



Yet another example of the wealth accrued by the creations that come from this rewarding combination of design and crafts.

178



^ SUGAR BOWL KAWKI

LLADRÓ DESIGN



^ SET OF 2 CUPS AND SAUCERS KAWKI

_KAWKI COLLECTION



Aleksandra
Žeromska

179



© Alicja Lesiak

Born in Warsaw, Poland, Aleksandra Žeromska works between art and design, redefining and blurring the boundaries between the two. Her experience with porcelain truly blossomed as a member of the Lladró design team, where she had an opportunity to explore this incredible material alongside the brand's master artisans. Drawing by hand plays a major role in Aleksandra's work, helping her to transform our surrounding reality into new and unexpected forms in a highly personal language.

_ALEKSANDRA ŽEROMSKA

ART of the TABLE

180

Art direction by Lladró
Photography by Cualiti
Location: VLC studio

> PARROT PARADE CORAL
>> PARROT'S SCENTED TREASURE RED

#THEPORCELAINREVOLUTION #BREAKINGTHEMOLDS

Parakeets, coral, fish, toucans... are the core symbols of collections with a character all of their own, combining imagination, a sense of *humor* and the excellence of *handcrafted porcelain*.



181



182

Lladró is capable of giving shape to any idea in porcelain. The mastery of the brand's *artisans* and their consummate control of the material make everything *possible and tangible*.

183

Creations grounded in the pragmatism and imagination of functional design and in the *exuberance, sumptuousness* and the *endless color possibilities of porcelain*. A material with no boundaries for design.

184



185



>>>

CORAL CENTERPIECE
CORAL CAKE TRAY
CORAL VASE

186



>>>

TOUCAN 2 TALL CRYSTAL GLASSES + 2 STIRRERS SET
TOUCAN ICE BUCKET
TOUCAN GLASS BOTTLE
TOUCAN 1 LOW CRYSTAL GLASS

LLADRÓ

DESIGN

_EDITORIAL

187



ART OF THE TABLE

188



189



>>>

TOUCAN 2 TALL CRYSTAL GLASSES + 2 STIRRERS SET
TOUCAN ICE BUCKET

190

SHAPES & COLORS

Art direction by Odosdesign
Photography by Josele Castellón
Location: BCN



191

>> MACAW BIRD VASE

Sometimes functional, other times simply and *wonderfully visual enjoyment*. In porcelain design both options are the perfect excuse to spread beauty and design.

192



- << STARLING I PURPLE
- << STARLING II BLACK
- >> STARLING I BLACK
- >> STARLING II PURPLE

193



194



WILD TOTEMS
> PANTHER WOMAN
>> TIGER MAN

LLADRÓ DESIGN

_EDITORIAL

195

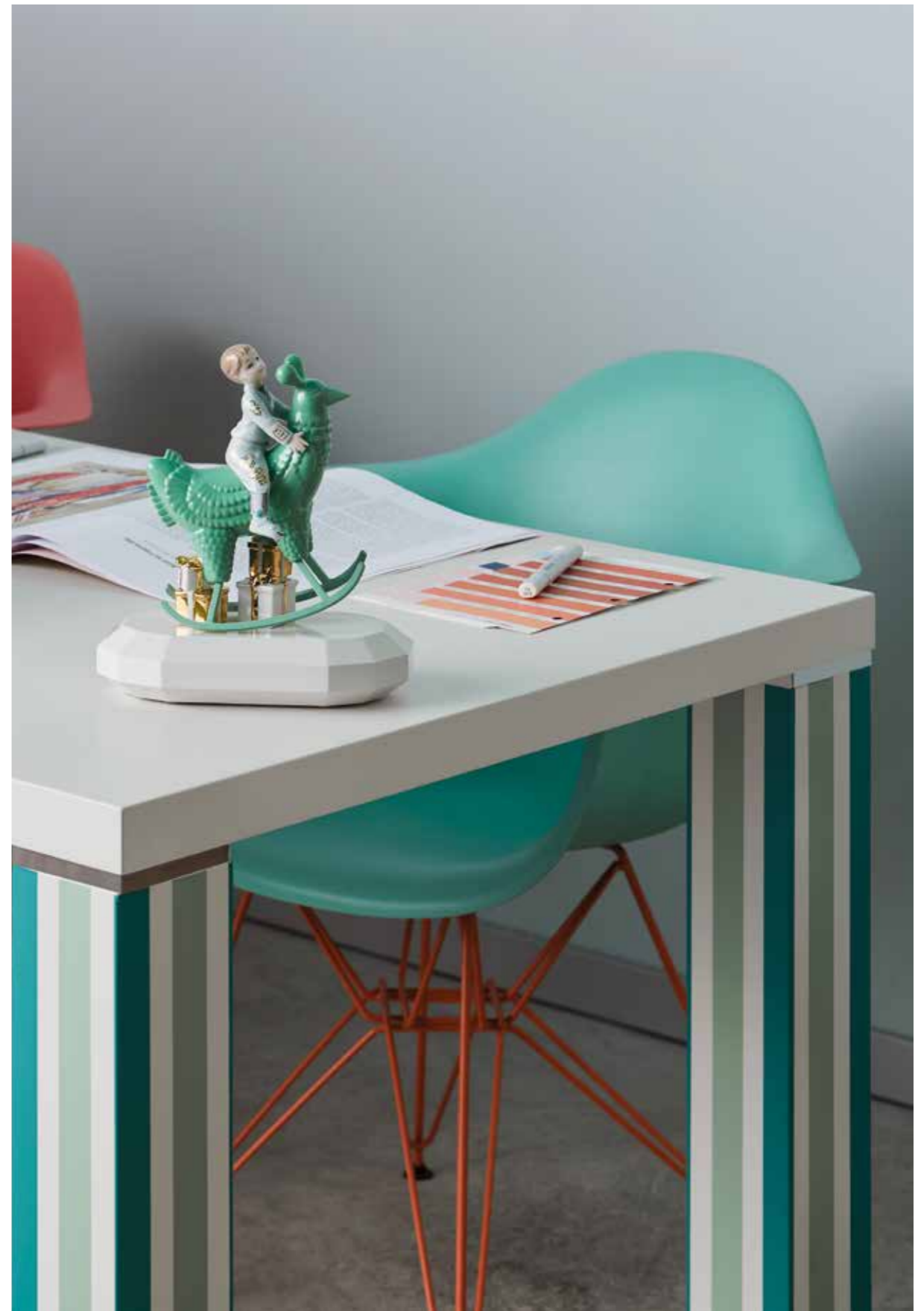


> LITTLE TURTLE
>> TURTLE

_SHAPES & COLORS



>> THE FAMILY PORTRAIT by Jaime Hayon



198



UNDERWATER
 ^ MUMMY BEAR AND BABIES
 >> WHITE RHINO

Infinite shades that
 enrich the forms.

WHALES
 > WHALE
 >> LITTLE WHALE

199



200



BIRD BOXES
 > QUETZAL BOX
 >> HUMMINGBIRD BOX

> MACAW BIRD VASE RED
 >> MACAW BIRD VASE

LLADRÓ DESIGN

_EDITORIAL



201



_SHAPES & COLORS

The *art* we surround ourselves with is what defines us, it is the vehicle through which we express our tastes, preferences and even circumstances.

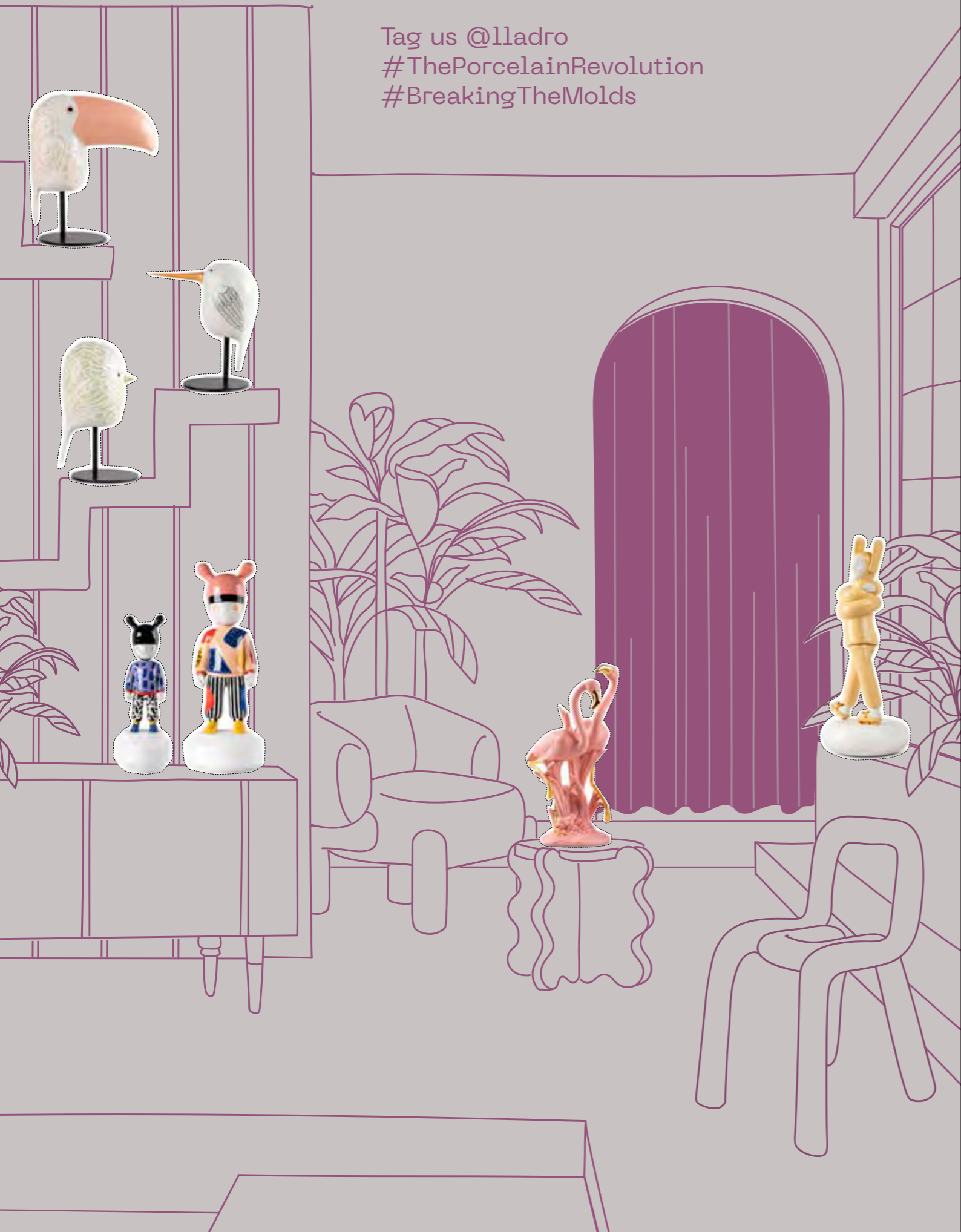
Creations that arouse subjective opinions, making them even more *powerful* and *transversal*.





205

Tag us @lladro
#ThePorcelainRevolution
#BreakingTheMolds



208	THE GUEST
212	EMBRACED BY JAIME HAYON
212	THE FANTASY BY JAIME HAYON
212	KINGS OF THE SEA
214	AWESOME INSECTS
214	BOLDBLACK
215	BOLDBLUE
215	BOLDRED
216	THE DREAMER BY LAOLU
216	FIERCE PORTRAITS
216	WILD TOTEMS
217	INK
217	THE FLAMINGOS
217	UNDERWATER
218	WHALES
218	TURTLES
218	COSMIC
219	EPHEMERAL TREASURES
219	YOKAY
219	POKEMON
220	DISNEY
220	WARNER
220	DORAEMON
221	STAR WARS
222	ORIGAMI
224	LIFE IS FLOWER BY YASUMICHI MORITA
224	RE-CYCLOS BY BODO SPERLEIN & COMMITTEE
224	STARLINGS
225	FACE2FACE
225	UNUSUAL FRIENDS
225	BABY ANIMALS
226	KAW/KI BY ALEKSANDRA ŽEROMSKA
226	ANIMAL JEWELS
226	CYBORG
227	THE PARROT PARTY
227	MACAW BIRD
227	BIRD BOXES
228	CORAL
228	LOVER'S EYES
228	TOUCAN
229	UNICORN
229	HOESE VASE
229	LADY LUCK
229	FLUIDITY

TECHNICAL DATA

THE GUEST

THE **GUEST** / **TWO SIZES**

BIG SIZE 20 ½ x 7 ½ x 7 ½
52 x 19 x 19 cm

SMALL SIZE 11 ¾ x 4 ¼ x 4 ¼
30 x 11 x 11 cm

BLOCK COLORS

208



The White Guest
Big
01007277
Base included

The White Guest
Little
01007732
Base included

The Black Guest
Big
01007282
Base included

The Black Guest
Little
01007733
Base included

METALLIC COLORS



The Golden Guest
Big
01007760
Base included

The Golden Guest
Little
01007739
Base included

The Silver Guest
Big
01008814
Base included

The Silver Guest
Little
01007740
Base included

METALLIC COLORS



The Guest Little
Purple on Yellow
01007746
Base included

The Metallic Red
Guest Little
01007754
Base included

BLOCK COLORS

209



The Blue Guest
Little
01007736
Base included

The Indigo Blue
Guest
Little
01008812
Base included

The dark Blue Guest
Little
01007750
Base included

The Red Guest
Little
01007734
Base included

The Orange Guest
Little
01007749
Base included



The Yellow Guest
Little
01007735
Base included

The Brown Guest
Little
01008815
Base included

The dark Green
Guest Little
01008813
Base included

The Green Guest
Little
01007737
Base included

The Pink Guest
Little
01007763
Base included

BY CAMILLE WALALA



The Guest by Camille Walala - Big
01007761
Limited edition of 300 pieces
Base included

The Guest by Camille Walala - Little
01007762
Numbered edition
Base included

BY JAIME HAYON



The Guest by Jaime Hayon - Big
01007278
SOLD OUT
Limited edition of 250 pieces
Base included

The Guest by Jaime Hayon - Little
01007283
Numbered edition
Base included

THE GUEST

BY KZENG JIANG



The Guest by Kzeng Jiang - Big
01007757
Limited edition of 300 pieces
Base included

The Guest by Kzeng Jiang - Little
01007758
Numbered edition
Base included

BY DEVILROBOTS



The Guest by Devilrobots - Big
01007280
SOLD OUT
Limited edition of 250 pieces
Base included

The Guest by Devilrobots - Little
01007285
Numbered edition
Base included

BY JADE PURPLE BROWN



The Guest by Jade Purple Brown - Big
01008811
Limited edition of 300 pieces
Base included

The Guest by Jade Purple Brown - Little
01008810
Numbered edition
Base included

BY RICARDO CAVOLO



The Guest by Ricardo Cavolo - Big
01007747
SOLD OUT
Limited edition of 250 pieces
Base included

The Guest by Ricardo Cavolo - Little
01007748
Numbered edition
Base included

BY GARY BASEMAN



The Guest by Gary Baseman - Big
01007889
SOLD OUT
Limited edition of 250 pieces
Base included

The Guest by Gary Baseman - Little
01007890
Numbered edition
Base included

BY PAUL SMITH



The Guest by Paul Smith - Big
01007730
SOLD OUT
Limited edition of 250 pieces
Base included

The Guest by Paul Smith - Little
01007731
SOLD OUT
Numbered edition
Base included

THE GUEST

BY ROLITO



The Guest by Rolito - Big
01007897
SOLD OUT
Limited edition of 250 pieces
Base included

The Guest by Rolito - Little
01007898
Numbered edition
Base included

BY TIM BISKUP



The Guest by Tim Biskup - Big
01007279
SOLD OUT
Limited edition of 250 pieces
Base included

The Guest by Tim Biskup - Little
01007284
Numbered edition
Base included

BY HENN KIM



The Guest by Henn Kim - Big
01007752
SOLD OUT
Limited edition of 250 pieces
Base included

The Guest by Henn Kim - Little
01007753
Numbered edition
Base included

BY SUPAKITCH



The Guest by Supakitch - Big
01007755
Limited edition of 300 pieces
Base included

The Guest by Supakitch - Little
01007756
Numbered edition
Base included

BY JUAN DIAZ-FAES



THE GUEST

THE FANTASY COLLECTION

The Guest by Camille Walala - Big
01007761

Limited edition of 300 pieces
Base included

The Guest by Camille Walala - Little
01007762

Numbered edition
Base included



The Lover I
01007252

38 x 22 x 20 cm
15 x 8 3/4 x 7 3/4"

Base included

The Lover II
01007253

38 x 22 x 20 cm
15 x 8 3/4 x 7 3/4"

Base included

The Lover III
01007254

38 x 22 x 20 cm
15 x 8 3/4 x 7 3/4"

Base included

Conversation Vase II *
01007258

52 x 31 x 31 cm
20 1/2 x 12 1/4 x 12 1/4"

Conversation Vase I *
01007257

52 x 31 x 31 cm
20 1/2 x 12 1/4 x 12 1/4"

EMBRACED

TOUCAN

212

213



Embraced (yellow)
01009652

57 x 25 x 23 cm
22 1/2 x 9 3/4 x 9"

Embraced (pink)
01009654

57 x 25 x 23 cm
22 1/2 x 9 3/4 x 9"

Embraced
01009653

57 x 25 x 23 cm
22 1/2 x 9 3/4 x 9"

Limited edition of 500 pieces



Medium Conversation Vase
01007596

47 x 31 x 31 cm
18 1/2 x 12 1/4 x 12 1/4"

Limited edition of 500 pieces

Small Conversation Vase
01007597

39 x 27 x 27 cm
15 1/4 x 10 3/4 x 10 3/4"

Limited edition of 500 pieces

* The vases 01007257 and 01007258 can tie in with The Lover.

THE FANTASY COLLECTION

KINGS OF THE SEA



The Family Portrait
01007255

35 x 34 x 27 cm
13 3/4 x 13 1/2 x 10 3/4"

Base included

The Rocking Chicken Ride
01007256

24 x 21 x 13 cm
9 1/2 x 8 1/4 x 5"

Base included

The Clown - lamp
01007271 (CE) | 01007272 (US)
01007273 (JP) | 01007274 (UK)

60 x 35 x 35 cm
23 1/2 x 13 3/4 x 13 3/4"

Base included
Touch dimmer system on the nose.



Lobster (blue)
01009693

13 x 45 x 22 cm
5 x 17 3/4 x 8 3/4"

Crab (red)
01009694

14 x 28 x 28 cm
5 1/2 x 11 x 11"

AWESOME INSECTS

BOLD BLACK



Bee
01009592

14 x 26 x 20 cm
6 x 10 1/4 x 7 3/4"

Rhinoceros Beetle
01009425

12 x 26 x 16 cm
4 3/4 x 10 1/4 x 6 1/4"

Rhinoceros Beetle (matte white)
01009478

12 x 26 x 16 cm
4 3/4 x 10 1/4 x 6 1/4"

Grasshopper
1009544

11 x 27 x 26 cm
4 1/4 x 10 3/4 x 10 1/4"



Toucan (black-gold)
01009712

38 x 19 x 28 cm
15 x 7 1/2 x 11"

Limited edition of 1.000 pieces

Owl sculpture (black-gold)
01009692

41 x 25 x 22 cm
16 1/4 x 9 3/4 x 8 3/4"

Limited edition of 1.000 pieces

Koala (black-gold)
01009769

34 x 21 x 27 cm
13 1/4 x 8 1/4 x 10 3/4"

Limited edition of 1.000 pieces

214



Dragonfly
01009427

20 x 23 x 20 cm
7 3/4 x 9 x 7 3/4"

Hercules Beetle
01009426

16 x 25 x 20 cm
6 1/4 x 9 3/4 x 7 3/4"

BOLD BLACK



Rhino (black-gold)
01009595

22 x 45 x 19 cm
8 3/4 x 17 3/4 x 7 1/2"

Limited edition of 1.000 pieces

Gorilla lamp (black-gold)
01024166 (CE) | 01024167 (UK)
01024168 (US) | 01024169 (JP)

60 x 40 x 40 cm
23 1/2 x 15 3/4 x 15 3/4"

Leading the way (black-gold)
01009581

27 x 36 x 14 cm
10 3/4 x 14 1/4 x 5 1/2"

Limited edition of 1.000 pieces

Macaw bird (black-gold)
01009577

45 x 22 x 20 cm
17 3/4 x 8 3/4 x 7 3/4"

Limited edition of 1.000 pieces

BOLD BLUE



Mummy bear and babies (blue-gold)
01009565

19 x 39 x 25 cm
7 1/2 x 15 1/4 x 9 3/4"

Limited edition of 500 pieces

Koi (blue-gold)
01009579

31 x 21 x 24 cm
12 1/4 x 8 1/4 x 9 1/2"

Limited edition of 750 pieces

Attentive bunny (blue-gold)
01009448

11 x 12 x 7 cm
4 1/4 x 4 3/4 x 2 3/4"

Little Monkey (blue-gold)
01009548

23 x 17 x 17 cm
9 x 6 3/4 x 6 3/4"

Limited edition of 500 pieces

Penguin family (blue-gold)
01009539

25 x 16 x 14 cm
9 3/4 x 6 1/4 x 5 1/2"

Limited edition of 500 piece

215

BOLD RED



Macaw bird (red-gold)
01009690

45 x 22 x 20 cm
17 3/4 x 8 3/4 x 7 3/4"

Limited edition of 300 pieces

Gorilla (metallic red)
01009747

37 x 23 x 23 cm
14 1/4 x 9 x 9"

Limited edition of 50 pieces
Base included

THE DREAMER

INK



The Dreamer by Laolu-Bust
01009667

32 x 38 x 22cm
12 1/2 x 11 x 8 3/4"

Limited edition of 300 pieces

The Dreamer by Laolu-Head
01009668

18 x 27 x 23cm
7 x 10 3/4 x 9"

Limited edition of 1500 pieces



Wild Panther
01009535

17 x 38 x 17 cm
6 3/4 x 15 x 6 3/4"

True Love
01009534

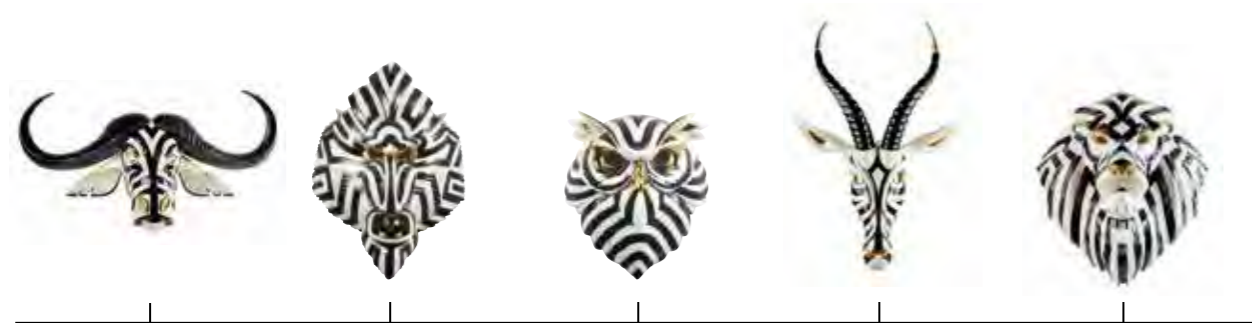
30 x 31 x 15 cm
11 3/4 x 12 1/4 x 6"

FIERCE PORTRAITS

THE FLAMINGOS

216

217



Buffalo mask (black-gold)
01009594

36 x 67 x 22 cm
14 1/4 x 26 1/2 x 8 3/4"

Mandrill mask (black-gold)
01009405

44 x 31 x 14 cm
17 1/4 x 12 1/4 x 5 1/2"

Owl mask (black-gold)
01009406

35 x 32 x 14 cm
13 3/4 x 12 1/2 x 5 1/2"

Antelope Mask (black-gold)
1009541

57 x 39 x 18 cm
22 1/2 x 15 1/4 x 7"

Lion Mask (black-gold)
01009566

60 x 38 x 30 cm
23 1/2 x 15 x 11 3/4"



Dagger and Rose
01009556

36 x 15 x 12 cm
14 1/4 x 6 x 4 3/4"



The Flamingos (pink)
01009675

33 x 15 x 17cm
13 x 6 x 6 3/4"

WILD TOTEMS

UNDERWATER



Tiger Mask (black-gold)
01009404

38 x 30 x 23 cm
15 x 11 3/4 x 9"

Lion Mask/ Wild Nature
01009703

60 x 38 x 30 cm
23 1/2 x 15 x 11 3/4"

Limited edition of 400 pieces

Panther Woman
01009428

42 x 10 x 11 cm
16 1/2 x 4 x 4 1/4"

Tiger Man
01009429

44 x 14 x 10 cm
17 1/4 x 5 1/2 x 4"



White Rhino - Underwater
01009739

22 x 45 x 19 cm
8 3/4 x 17 3/4 x 7 1/2"

Mummy Bear and Babies - Underwater
01009740

19 x 39 x 25 cm
7 1/2 x 15 1/4 x 9 3/4"

Elephant - Underwater
01009761

27 x 36 x 14 cm
10 3/4 x 14 1/4 x 5 1/2"

WHALES



Whale
01009569

13 x 48 x 25 cm
5 x 19 x 9 ¾"

Little Whale
01009570

11 x 27 x 16 cm
4 ¼ x 10 ¾ x 6 ¼"

TURTLES



Turtle
01009673

10 x 36 x 32 cm
4 x 14 ¼ x 12 ½"

Little Turtle
01009674

9 x 27 x 24 cm
3 ½ x 10 ¾ x 9 ½"

COSMIC



Cosmic Girl and Cat
01009792

32 x 18 x 10 cm
12 ½ x 7 x 4"

Cosmic Rocket lamp
01024459

40 x 18 x 18 cm
15 ¾ x 7 x 7"

EPHEMERAL TREASURES



Soul Rider
01009770

40 x 20 x 14 cm
15 ¾ x 7 ¾ x 5 ½"

Limited edition of
500 pieces

Ephemeral Treasures
01002037

60 x 56 x 42 cm
23 ½ x 22 x 16 ½"

Limited edition of 200 pieces
Base included

YOKAI



Yokai - Tengu
01009795

27 x 17 x 14 cm
10 ¾ x 7 ¾ x 5 ½"

POKÉMON



Pikachu
01009816

25 x 23 x 14 cm
10 ¾ x 7 ¾ x 5 ½"

DISNEY

STAR WARS



Mickey Mouse in Black and white 01009601 31 x 17 x 15cm 12 ¼ x 6 ¼ x 6"	Mickey Mouse Platinum 01009706 31 x 17 x 15cm 12 ¼ x 6 ¼ x 6"	Minnie Mouse in Black and white 01009707 31 x 17 x 15cm 12 ¼ x 6 ¼ x 6"	Mickey Total Black 01009755 31 x 17 x 15cm 12 ¼ x 6 ¼ x 6"	Minnie Total Black 01009779 31 x 17 x 15cm 12 ¼ x 6 ¼ x 6"
---	---	---	--	--



Darth Vader™ (black) 01009782 40x 42x 29 cm 15 ¾ x 16 ½ x 11 ½" Limited edition of 504 pieces	Darth Vader Helmet 01009764 33 x 27 x 28 cm 13 x 10 ¾ x 11" Limited edition of 1500 pieces	C3PO™ 01009736 34 x 16 x 14 cm 13 ½ x 6 ¼ x 5 ½" Limited edition of 1000 pieces	Han Solo™ 01009735 39 x 14 x 13 cm 15 ¼ x 5 ½ x 5"
--	---	--	--

WARNER

220



Tweety 01009748 30 x 18 x 15cm 11 ¾ x 7 x 6"	Batman™ 01009708 43 x 44 x 34cm 17 x 17 ¼ x 13 ½" SOLD OUT	Superman 01009777 46 x 42 x 27cm 18 x 16 ½ x 10 ¾" Limited Edition of 500 units
--	--	--

221



R2-D2™ 01009736 20 x 13 x 11 cm 7 ¾ x 5 x 4 ¼"	Stormtrooper™ 01009714 40x 16x 17cm 15 ¾ x 6 ¼ x 6 ¾" Limited edition of 1138 pieces	Stormtrooper TM(version 2) 01009765 40x 16x 14cm 15 3/4 x 6 1/4 x 5 1/2" Limited edition of 1138 pieces	Grogu™ 01009422 15x 14 x 11cm 6 x 5 ½ x 4 ¼"
--	---	--	--

DORAEMON



Doraemon
01009728
14 x 12 x 8 cm
5 ½ x 4 ¾ x 3 ¼"



Princess Leia's New hope™ 01009412 35 x 14x 15cm 13 ¾ x 5 ½ x 6"	Rey™ 01009414 39 x 23x 16cm 15 ¼ x 9 x 6 ¼"	Queen Amidala in the Throne Room™ 01009413 55 x 32x 32cm 21 ¾ x 12 ½ x 12 ½" Limited edition of 1138 pieces	Ashoka™ 01009420 56 x 24 x 29 cm 22 x 9 ½ x 11 ½" Limited edition of 1000 pieces
--	---	--	---



Bull (matte black)
01009593
24 x 50 x 16 cm
9 1/2 x 19 3/4 x 6 1/4"

Bull (metallic red)
01009729
24 x 50 x 16 cm
9 1/2 x 19 3/4 x 6 1/4"

Lion (matte black)
01009746
25 x 48 x 14 cm
9 3/4 x 19 x 5 1/2"

Dragon
01002033
36x 49x 18 cm
14 1/4 x 19 1/4 x 7"

Limited edition of 777 pieces



Panther (silver)
01009591
19 x 50 x 12 cm
7 1/2 x 19 3/4 x 4 3/4"

Panther
01009298
19 x 50 x 12 cm
7 1/2 x 19 3/4 x 4 3/4"

Panther (blue)
01009456
19 x 50 x 12 cm
7 1/2 x 19 3/4 x 4 3/4"

Panther (glazed black)
01009496
19 x 50 x 12 cm
7 1/2 x 19 3/4 x 4 3/4"



Dragon Golden
01009797
36x 49x 18 cm
14 1/4 x 19 1/4 x 7"

Elephant (blue)
01009560
43 x 52 x 20 cm
17 x 20 1/2 x 7 3/4"

Elephant (black)
01009559
43 x 52 x 20 cm
17 x 20 1/2 x 7 3/4"

Horse (matte black)
01009796
41 x 50 x 14 cm
16 1/4 x 19 3/4 x 5 1/2"

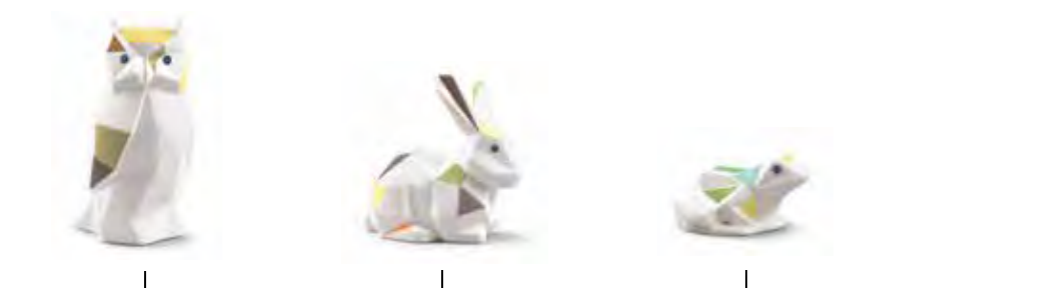


Panther (metallic red)
01008750
19 x 50 x 12 cm
7 1/2 x 19 3/4 x 4 3/4"

Panther (iridescent)
01009691
19 x 50 x 12 cm
7 1/2 x 19 3/4 x 4 3/4"

Panther (coral)
01009457
19 x 50 x 12 cm
7 1/2 x 19 3/4 x 4 3/4"

Panther (golden)
01009580
19 x 50 x 12 cm
7 1/2 x 19 3/4 x 4 3/4"



Owl
01009265
16 x 8 x 9 cm
6 1/4 x 3 1/4 x 3 1/2"

Rabbit
01009264
12 x 13 x 7 cm
4 3/4 x 5 x 2 3/4"

Frog
01009266
5 x 10 x 8 cm
2 x 4 x 3 1/4"



Panther (matte black)
01009299
19 x 50 x 12 cm
7 1/2 x 19 3/4 x 4 3/4"

Jungle Panther Black
01009790
19 x 50 x 12 cm
7 1/2 x 19 3/4 x 4 3/4"

LIFE IS FLOWER



Life is flower (black&white)
01008796
18 x 32 x 25 cm
7 x 12 1/2 x 9 3/4"
Limited edition of 100 pieces
Base included

RE-CYCLOS



Love I (blossoms)
01007231
32 x 21 x 15 cm
12 1/2 x 8 1/4 x 6"



Love II (blossoms)
01007232
27 x 17 x 14 cm
10 3/4 x 6 3/4 x 5 1/2"



Love III (blossoms)
01007233
34 x 17 x 11 cm
13 1/2 x 6 3/4 x 4 1/4"



Canvas Vase flowers tapestry
01007077
38 x 23 x 20 cm
15 x 9 x 7 3/4"

STARLINGS



Starling I (black)
01009676
17x 19x 9cm
6 3/4 x 7 1/2 x 3 1/2"



Starling II (black)
01009677
14 x 19x 9cm
5 1/2 x 7 1/2 x 3 1/2"



Starling I (purple)
01009678
17x 19x 9cm
6 3/4 x 7 1/2 x 3 1/2"



Starling II (purple)
01009679
14 x 19x 9cm
5 1/2 x 7 1/2 x 3 1/2"

TOUCAN



Face 2 face - Toucan
01009563
29 x 23 x 13 cm
11 1/2 x 9 x 5"



Face 2 face - Hummingbird
01009561
24 x 21 x 13 cm
9 1/2 x 8 1/4 x 5"



Face 2 face - Sparrow
01009562
26 x 15 x 13 cm
10 1/4 x 6 x 5"

UNUSUAL FRIENDS



Unusual Friends-CAT
01009552
19 x 9 x 11 cm
7 1/2 x 3 1/2 x 4 1/4"



Unusual Friends-DOG
01009553
23 x 7 x 10 cm
9 x 2 3/4 x 4"

BABY ANIMALS



Baby Horse
01009029
19 x 18 x 8 cm
7 1/2 x 7 x 3"



Baby Snake
01009767
16 x 12 x 11 cm
6 1/4 x 4 3/4 x 4 1/4"



Baby Dragon
01009766
18 x 11 x 13 cm
7 x 4 1/4 x 5"

KAWKI



Sugar Bowl Kawki
01009659
21x14x17 cm
8 1/2 x 5 1/2 x 6 3/4"

Coffee Pot Kawki
01009660
29 x 15 x 10 cm
11 1/2 x 6 x 4"

Milk Jug Kawki
01009662
13x 10 x 8 cm
5 x 4 x 3 1/4"

Set Of 2 Cups and Saucers Kawki
01009661
8 x 25 x 13 cm
3 1/4 x 9 3/4 x 5"

Coffee Set Kawki
01009663

THE PARROT PARTY



Parrot Hang I
01007853
17 x 15 x 14 cm
6 3/4 x 6 x 5 1/2"

Parrot's scented Treasure (green)
01040150
27 x 25 x 14 cm
10 3/4 x 9 3/4 x 5 1/2"

Parrot Parade (blue)
01007850
41 x 25 x 20 cm
16 1/4 x 9 3/4 x 7 3/4"

Parrot Parade (coral)
01007846
41 x 25 x 20 cm
16 1/4 x 9 3/4 x 7 3/4"

ANIMAL JEWELS



Squirrel Jewel
01009726
22 x 23 x 14 cm
8 3/4 x 9 x 5 1/2"

Fox Jewel
01009727
32 x 21 x 18 cm
12 1/2 x 8 1/4 x 7"

226

227



Parrot table lamp - black
01024152 (CE)
01024153 (UK)
01024154 (US)
01024155 (JP)
45 x 20 x 20 cm
17 3/4 x 7 3/4 x 7 3/4"

Parrot wall light (right) - black
01024157 (CE/UK)
01024158 (US)
01024159 (JP)
21 x 13 x 14 cm
8 1/4 x 5 x 5 1/2"

Parrot Vanity
01007849
37 x 27 x 16 cm
14 1/2 x 10 3/4 x 6 1/4"

Parrot Romance
01007848
29 x 41 x 41 cm
11 1/2 x 16 1/4 x 16 1/4"

CYBORG

MACAW BIRD



Macaw Bird Cyborg
01009757
45 x 22 x 20 cm
17 3/4 x 8 3/4 x 7 3/4"

Rhino Cyborg
01009756
22 x 45 x 19 cm
8 3/4 x 17 3/4 x 7 1/2"



Macaw Bird Vase
01009540
56 x 29 x 24 cm
22 x 11 1/2 x 9 1/2"

Macaw Bird Vase (Red)
01009686
56 x 29 x 24 cm
22 x 11 1/2 x 9 1/2"

Quetzal Box
01009650
26 x 21 x 20 cm
10 1/4 x 8 1/4 x 7 3/4"

Hummingbird Box
01009651
29 x 18 x 16 cm
11 1/2 x 7 x 6 1/4"

CORAL



Coral Vase 01009477 44 x 16 x 16 cm 17 1/4 x 6 1/4 x 6 1/4"	Coral Cake Tray 01009476 40 x 31 x 31 cm 15 3/4 x 12 1/4 x 12 1/4"	Coral Centerpiece 01009475 25 x 39 x 39 cm 9 3/4 x 15 1/4 x 15 1/4"	Coral Candle 01040254 22 x 14 x 14 cm 8 3/4 x 5 1/2" x 5 1/2"
---	--	---	---

UNICORN



Horse vase
01009808
26 x 26 x 11 cm
10 1/4 x 10 1/4 x 4 1/4"

HORSE VASE



Horse vase
01009798
35 x 33 x 15 cm
13 3/4 x 13 x 6"

LOVER'S EYES



Lover's Eyes jewelry box 01009666 21 x 17 x 18 cm 8 1/4 x 6 3/4 x 7"	Lover's Eyes tray 01009665 6 x 34 x 26 cm 2 1/4 x 13 1/2 x 10 1/4"	Lover's Eyes vase 01009664 39 x 21 x 22 cm 15 1/4 x 8 1/4 x 8 3/4"
--	--	--

LADY LUCK BY OLGA HANONO



Lady Luck jewelry box 01009785 21 x 17 x 18 cm 8 1/4 x 6 3/4 x 7"	Lady Luck vase 01009786 39 x 21 x 24 cm 15 1/4 x 8 1/4 x 9 1/2"
---	---

228

229

TOUCAN



Toucan Ice bucket 01009463 41 x 22 x 22 cm 16 1/4 x 8 3/4 x 8 3/4"	Toucan glass bottle 01009464 34 x 12 x 12 cm 13 1/2 x 4 3/4 x 4 3/4"	Toucan 2 tall crystal glasses + 2 Stirrers set 01009465 20 x 18 x 18 cm 7 3/4 x 7 x 7"	Toucan 1 low crystal glass 01009466 9 x 9 x 9 cm 3 1/2 x 3 1/2 x 3 1/2"	Toucan 1 tall crystal glass 01009467 14 x 8 x 8 cm 5 1/2 x 3 1/4 x 3 1/4"
--	--	--	---	---

FLUIDITY



Eternal Fluidity - Female 01009731 29 x 20 x 15 cm 11 1/2 x 7 3/4 x 6"	Eternal Fluidity - Male 01009730 32 x 30 x 17 cm 12 1/2 x 11 3/4 x 6 3/4"	Eternal Fluidity - Thinker 01009732 31 x 20 x 22 cm 12 1/4 x 7 3/4 x 8 3/4"
--	---	---

GRAPHIC DESIGN

ODOSDESIGN
LLADRÓ TEAM

PHOTOGRAPHY

ODOSDESIGN + JOSELE CASTELLÓ
CUALITI PHOTO STUDIO
ARTERO FOTÓGRAFOS
VINCENT URBANI
LLADRÓ TEAM

3D IMAGE

LAVS CREATIVE STUDIOS

ACKNOWLEDGEMENTS

ENRIC PASTOR
TEULAT
HOTEL BARCELÓ TORRE DE MADRID

PRINTED BY

FERNANDO GIL



#THEPORCELAINREVOLUTION

#BREAKINGTHEMOLDS

#LLADRÓ

CREDITS



LLADRÓ

HANDMADE PORCELAIN
Spain

VALENCIA, SPAIN

(+34) 963 187 000
(+34) 900 211 010 (TOLL FREE)

CUSTOMER-SERVICES@LLADRO.COM

WWW.LLADRO.COM

