

LLADRÓ

NEW CONCEPT - HANDMADE PORCELAIN · FALL 2023



70
YEARS



THE PORCELAIN REVOLUTION



LLADRÓ
70
YEARS

THE GUEST

PAGE 2

The Dreamer by Laolu

PAGE 6

Toucan

PAGE 8

Animal jewels

PAGE 10

MICKEY MOUSE

PAGE 14

The Dragon

PAGE 16

CHINESE ZODIAC

PAGE 20

Lover's Eyes

PAGE 22

KISS

PAGE 24

FIREFLY

PAGE 22

SOFT BLOWN

PAGE 24



New Concept

NEW CONCEPT
AT THE FOREFRONT OF
CONTEMPORARY DESIGN

We are celebrating Lladró's 70th anniversary. Seven decades revolutionizing the world of porcelain, both in the handcrafted processes of working with this natural, age-old material as well as in product diversification, as we can readily see in our annual new launches.

The creations on view in these pages are the result of this constant evolution, Lladró's most innovative facet. Bold, unexpected sculptures, lamps that filter warm light through porcelain and scents in unique containers. Creations in which design is coupled with traditional artisan processes to give voice to emotion and diversity.





The Guest by Camille Walala

The Guest collection continues to grow with new collaborations, this year with new versions signed by the French designer Camille Walala.

Based in London, Walala is known for her vibrant distinctive work based on radical illustrations. In this new creation, Walala invites spectators to explore two pieces showcasing her artistic vision combining optimism and chromatic energy.





The two *The Guest* by Camille Walala sculptures are full of contrasts, combining bold, bright colors with intricate patterns. Like the majority of her works, Walala has intervened on the Lladró porcelain with “slightly imperfect” abstract forms, circles and soft hand-drawn lines to create a dynamic and powerful visual effect. Two creations based on the artist’s series of artworks called “Putting Things in Perspective”, creating trompe l’oeils playing with planes and perspectives.

Vitality, energy and optical games for a collection that never fails to surprise.



THE GUEST BY CAMILLE WALALA - BIG
01007761
52 x 19 x 19 cm
20 1/2" x 7 1/2" x 7 1/2"
Limited Edition of 300 units

THE GUEST BY CAMILLE WALALA - LITTLE
01007762
30 x 11 x 11
11 3/4" x 4 1/4" x 4 1/4"
Numbered Edition



The Dreamer by Laolu

COMING SOON...



Under the name *The Dreamer*, a new creative project is born. In this poetic new project, international artists will express their imaginary, their way of seeing and understanding the world through the universal language of art. A new space where two sculptures become both the containers and the content, the metaphor of the particular universe that lives in each of us.

The Dreamer will debut with the first collaboration with Laolu Senbanjo, a renowned Nigerian artist based in New York.

This portrait of one of the most beautiful inhabitants of tropical rainforests now joins the Boldblack collection, our personal homage in black and gold to the incomparable animal kingdom.

The precise study of the feathering and the meticulous modeling give the piece a realism that contrasts with the unusual two-tone decoration. The finish of the piece is based on the counterpoint between the golden

luster, in both glazed and matte finishes, that covers the bird's large beak and eyes, and the background of matte black porcelain, which enhances it even further.

In addition, the toucan is perched on a branch with two large black flowers with stamens and leaves decorated in golden luster. Subtle details that make this creation a hugely successful decorative design.



TOUCAN (BLACK-GOLD)
01009712
38 x 19 x 28 cm
15" x 7 1/2" x 11"
Limited Edition of 1000 units

Boldblack





Animal jewels

Conceived to interpret jewelry in porcelain, the *Animals jewel* collection gets off to a start with a squirrel and a fox. These are two of the symbolic animals so often depicted in jewelry, and they are in themselves true gems of nature.

The formal and aesthetic approach seeks to reflect this treatment through two key elements. On one hand, the sculpture is inspired by the pure geometrical lines of art decó, as seen in the herringbone patterns on the fox's back and the squirrel's tail. And on the other, with the chosen decoration like the deep black of the tails and ears, the pearly grey used to paint the countless "pearls" adorning them and the emerald green eyes or sapphire blue, framed in golden luster.

Creations with the spirit of jewelry handcrafted in porcelain.



FOX JEWEL
01009727
32 x 21 x 18 cm
12 1/2" x 8 1/4" x 7"



SQUIRREL JEWEL
01009726
22 x 23 x 14 cm
8 3/4" x 9" x 5 1/2"



The jewelry-like appearance of these creations is the end result of meticulous artisan work combined with a well-chosen decoration, consisting of a herringbone pattern and a large number of “little pearls” decorating and outlining the animals’ eyes. And the colors, black, gold and pearly grey. An exercise in the consummate control of sculpture, from the execution of the form to the decoration.

Animal jewels





Mickey Mouse Platinum

Mickey Mouse, the most famous character from the Disney factory, is recreated in porcelain with a metallic finish. Mickey's body is decorated with a shiny platinum luster, on which we can see a black flower in porcelain, handcrafted petal by petal.

The piece rests on a black porcelain base with a design of geometric facets. The metal effect and matte black porcelain are combined to create this new version of one of the best-loved icons in popular culture.



MICKEY MOUSE PLATINUM
01009706
31 x 17 x 15 cm
12 1/4" x 6 3/4" x 6"

According to the Chinese zodiac, the year 2024 will be ruled by the dragon, the most majestic of all creatures in millenarian oriental culture. A symbol of power, energy, honor and good luck, the Year of the Dragon is believed to be a year of transformation, growth and abundance.

Our artists have portrayed this zodiac sign, which also commences the Lunar New Year, in a sculptural creation that mixes contemporary design with traditional colors like red and gold.



DRAGON (RED - GOLD)
01009713
13 x 16 x 24 cm
5" x 6" x 9 1/2"

The Dragon



龙年大吉



We are celebrating the Chinese New Year / Lunar New Year with an exclusive pack containing two creations — the *Dragon* sculpture and a scented candle with a dragon on the lid, both with a unique decoration with golden motifs — and six New Year envelopes.

The dragon's head and the recipient for the candle are specifically decorated for this pack with an exclusive golden motif. A decorative piece with a home fragrance with the *Gardens of Valencia* scent.

YEAR OF THE DRAGON SET
01017823
Limited Edition of 288 units

YEAR OF THE DRAGON 2024



Besides, the *Chinese Zodiac* collection of home fragrances is also expanded with the *Dragon* candle and diffuser.



DRAGON PERFUME DIFFUSER - REDWOOD FIRE
01040300
21 x 9 x 9 cm
8 1/4" x 3 1/2" x 3 1/2"

DRAGON CANDLE - REDWOOD FIRE
01040288
12 x 8 x 8 cm
4 3/4" x 3 1/4" x 3 1/4"

Chinese ZODIAC

The candle and diffuser comprise a glass holder and a white porcelain lid with a detailed etching of a dragon in glazed and matte finishes. The candle contains 200 g of natural wax and the diffuser 100 ml of perfume. In both cases the scent is *Redwood Fire*, a fragrance with notes of violet, mimosa, sandalwood and cedar.



In 1785, when Maria Anne Fitzherbert opened a love letter from her admirer, Prince George of Wales, she wasn't expecting to find an eye, gazing intently back at her. He had fallen in love with Fitzherbert, but their courtship had been disastrous. Royal laws forbade a Catholic widow like his beloved from becoming a monarch. But the prince was determined to marry her and he wrote her a letter containing a rare, spellbinding gift, a miniature painting of George's own right eye.



Eye miniatures, also known as lover's eyes, cropped up across Britain and were in vogue for around half a century. As with the royal couple, most were commissioned as gifts expressing devotion between loved ones. All were intimate and exceedingly precious, meant to be tucked into pockets, or pinned close to the heart.

Lover's Eyes

The *Lover's Eyes* collection is inspired by this fascinating tradition, bringing into the 21st century a series of functional objects that seem to look back at us. A vase, a tray and a jewelry box featuring an eye etched in vivid detail on the porcelain. They are decorated in a combination of intense Saxony blue and golden luster on white porcelain. Creations full of meaning, both functional and hypnotic.

LOVER'S EYES JEWELRY BOX
01009666
21 x 17 x 18 cm
8 1/4" x 6 3/4" x 7"

LOVER'S EYES TRAY
01009665
6 x 34 x 26 cm
2 1/4" x 13 1/2" x 10 1/4"

LOVER'S EYES VASE
01009664
39 x 21 x 22 cm
15 1/4" x 8 1/4" x 8 3/4"

Affectionate, passionate, unforgettable. Kisses reinforce the meaning of words and very often express a multitude of feelings without the need for any words at all. They can be gestures of joy, love, tenderness or passion. Life without kisses would be all the poorer and, as many scientific studies contend, also less healthy.



KISSES



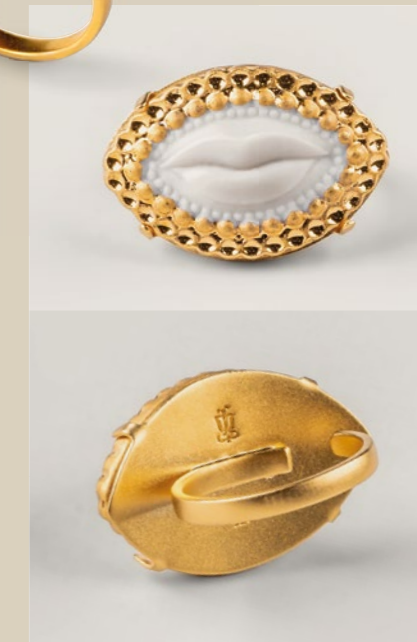
KISS PENDANT
01010317
28 x 14 x 1 cm
11" x 1 1/2" x 1/2"



KISS EARRINGS
01010318
3 x 4 x 1 cm
1 1/4" x 1 1/2" x 1/2"



KISS RING
01010316
2 x 3 x 3 cm
3/4" x 1 1/4" x 1 1/4"



And so, in this homage to the joy of kissing, we are now presenting these three pieces of jewelry on which perfectly outlined lips are etched. A ring, a pendant and earrings. All made on white porcelain surrounded by a frame of tiny balls decorated with matte and glazed golden luster.

A gesture as old as humankind itself, expressed in unique porcelain jewelry.



FIREFLY TABLE LAMP (PEARLY)
01024329 CE
01024330 UK
01024331 US
01024332 JP
01024333 CCC
68 x Ø35 cm
26 3/4" x Ø13 3/4"



FIREFLY FLOOR LAMP (PEARLY)
01024324 CE
01024325 UK
01024326 US
01024327 JP
01024328 CCC
162 x Ø45 cm
63 3/4" x Ø17 3/4"

FIREFLY HANGING LAMP (PEARLY)
01024320 CE/UK
01024321 US
01024322 JP
01024323 CCC
170 x Ø45 cm
67" x Ø17 3/4"

Firefly



Our palette of colors, boasting over 4000 different tonalities and developed by our in-house team of chemists, is constantly evolving with new ranges and a wide variety of decorative techniques, textures and finishes being continuously added.

This is readily visible in the new version of the *Firefly* collection. Table, hanging and floor lamps are now available in a new range of cream, beige and taupe tones with the application of pearly luster. A combination of neutral colors that is further enriched thanks to the sparkle produced by the luster.

Decoratively versatile lamps made with handcrafted porcelain elements. Lighting that combines research, design and excellence.

SOFT BLOWN

NICHETTO STUDIO



Photo: Morgan Norman

Nichetto Studio is a prominent name in the global design scene. Its founder, Luca Nichetto, was born in the island of Murano and has become a benchmark in lighting design with a style that masterfully plays with soft shapes and bright colors.

Soft Blown is the result of Nichetto Studio's first collaboration with Lladró. It is a collection composed of two lamps: the *Afloat* chandelier and the *Airbloom* table lamp. Available in a variety of color ranges, the collection draws inspiration from the convivial spirit of balmy, sunny days when the streets are lined with performance artists effortlessly crafting colorful and intricate balloon creations.

Soft Blown highlights the creative possibilities that arise from combining the knowledge of Nichetto Studio together with the craftsmanship and heritage of Lladró's porcelain lighting making it possible to approach any shape and type of decoration whilst establishing a creative exchange with unique results.



SOFT BLOWN TABLE LAMP (BLUE)
01024310 CE
01024311 UK
01024312 US
01024313 JP
01024314 CCC
41 x Ø27 cm
16 1/4" x Ø10 3/4"

SOFT BLOWN CHANDELIER (YELLOW)
01024301 CE/UK
01024302 US
01024303 JP
01024304 CCC
80 x Ø96 cm
31 1/2" x Ø37 3/4"



“I work so that traditional processes are seen in a contemporary way and also to get the younger generations to appreciate it, trying to re-educate people so that they understand the value of things”

Luca Nichetto, founder of Nichetto Studio



SOFT BLOWN TABLE LAMP (YELLOW)
 01024315 CE
 01024316 UK
 01024317 US
 01024318 JP
 01024319 CCC
 41 x Ø27 cm
 16 1/4" x Ø10 3/4"

SOFT BLOWN CHANDELIER (BLUE)
 01024297 CE/UK
 01024298 US
 01024299 JP
 01024300 CCC
 80 x Ø96 cm
 31 1/2" x Ø37 3/4"



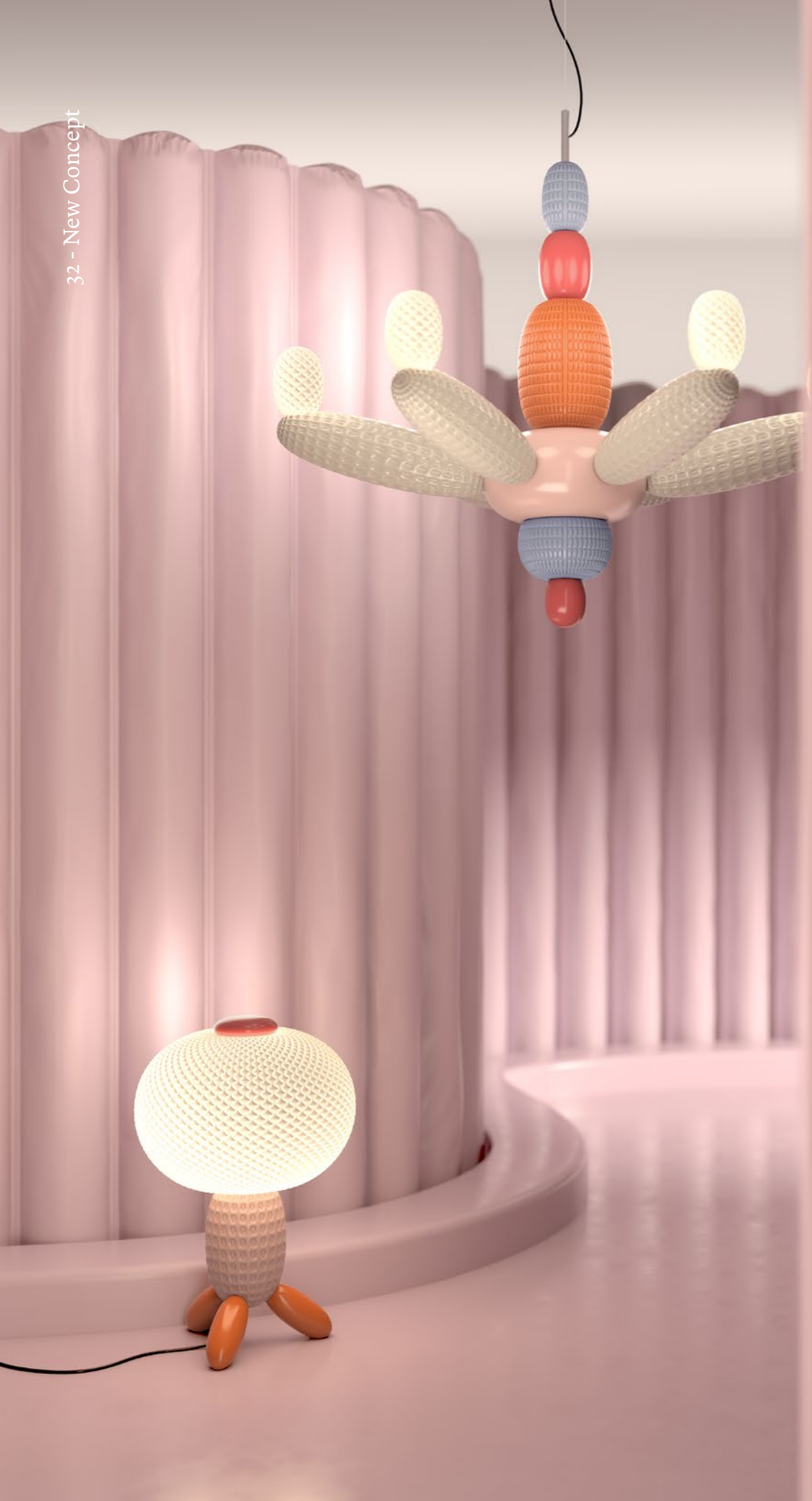
Thus, *Soft Blown* with its evocative imagery recreates the playful world of balloons and inflatables in the *Airbloom* table lamp and the *Afloat* chandelier.

Airbloom consists of a white central lampshade, made of translucent hand-ornamented porcelain, and a series of modules available in three color ranges in a glossy finish.

Afloat has a central body with 6 modules, in the same color ranges as *Airbloom*, combined with

globe shades in translucent white porcelain. All *Soft Blown* models feature LED lighting.

True to form, Nichetto Studio artfully blends playfulness and creativity with everyday functionality in the *Afloat* suspension lamp. Inspired by the intrinsic ease of summer with its ubiquity of street performers and balloon art, the lamp is composed of a string of porcelain “balloons” pieced together to create the illusion of weightlessness and form the final geometry.



SOFT BLOWN CHANDELIER (PINK)
01024293 CE/UK
01024294 US
01024295 JP
01024296 CCC
80 x Ø96 cm
31 1/2" x Ø37 3/4"

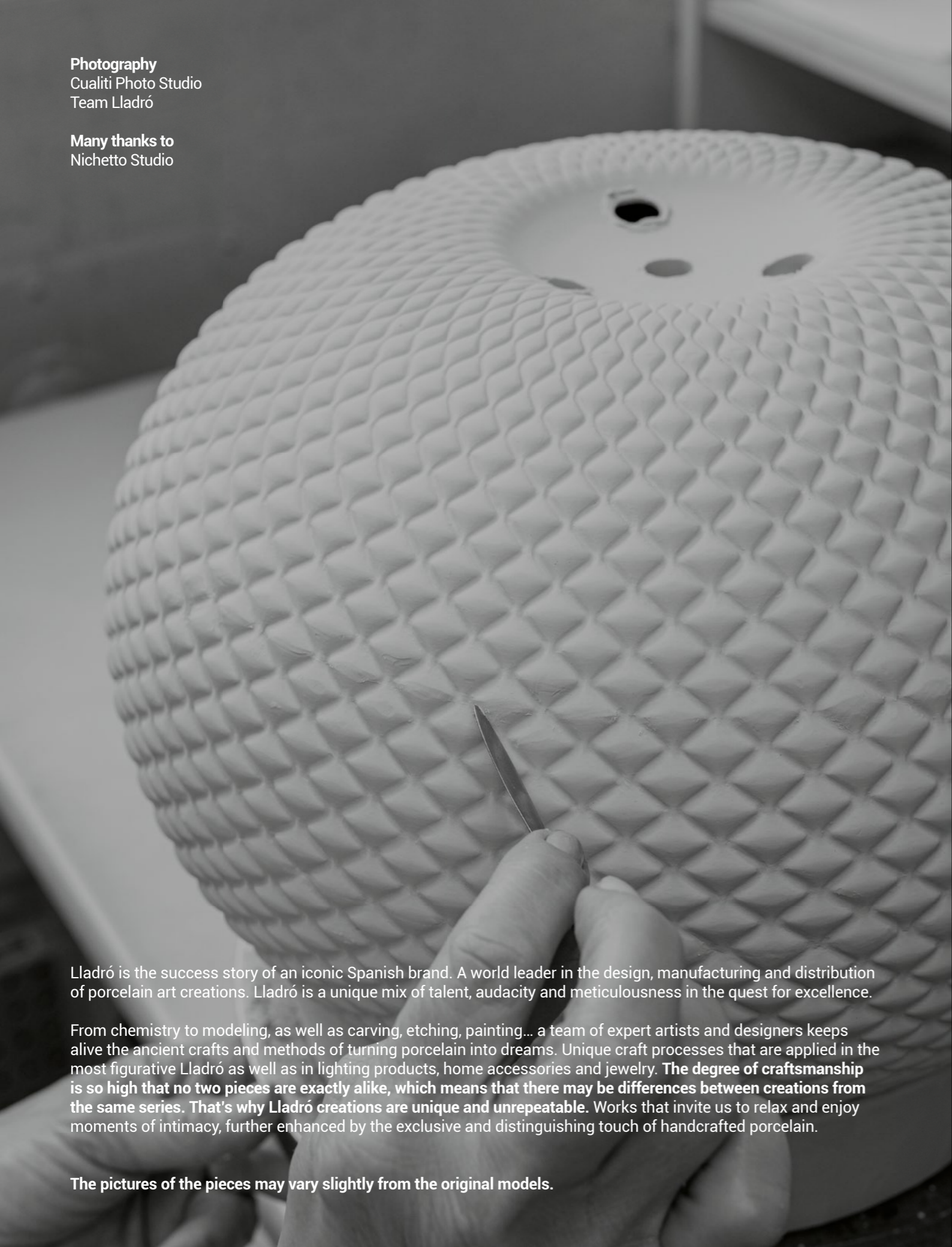
SOFT BLOWN TABLE LAMP (PINK)
01024305 CE
01024306 UK
01024307 US
01024308 JP
01024309 CCC
41 x Ø27 cm
16 1/4" x Ø10 3/4"



Evoking balloon art and other skillfully hand-blown pieces, the illusion of weightlessness belies the porcelain structure of the *Airbloom* table lamp. Drawing inspiration from the airy construction of such items, Nichetto Studio has created a playful but functional object with an unexpected, fanciful quality.

Photography
Cualiti Photo Studio
Team Lladró

Many thanks to
Nichetto Studio



Lladró is the success story of an iconic Spanish brand. A world leader in the design, manufacturing and distribution of porcelain art creations. Lladró is a unique mix of talent, audacity and meticulousness in the quest for excellence.

From chemistry to modeling, as well as carving, etching, painting... a team of expert artists and designers keeps alive the ancient crafts and methods of turning porcelain into dreams. Unique craft processes that are applied in the most figurative Lladró as well as in lighting products, home accessories and jewelry. **The degree of craftsmanship is so high that no two pieces are exactly alike, which means that there may be differences between creations from the same series. That's why Lladró creations are unique and unrepeatable.** Works that invite us to relax and enjoy moments of intimacy, further enhanced by the exclusive and distinguishing touch of handcrafted porcelain.

The pictures of the pieces may vary slightly from the original models.



LLADRÓ - VALENCIA, SPAIN
(+34) 963 187 000
(+34) 900 211 010 (TOLL FREE)
customer-services@es.lladro.com
www.lladro.com





LLADRÓ

HANDMADE PORCELAIN
Spain